



MAHALAXMI
City

A PLACE YOU
CAN CALL

Home

Welcome to *Mahalaxmi City*

HOME IS WHERE THE HEART LIVES

Walk into a home built with all the things that your heart holds precious - your aspirations, loved ones, experiences that last a lifetime and beyond. Walk into Mahalaxmi City.

One of Nagpur's most passionately developed residential projects; Mahalaxmi City is a gated township project that creates community living. It combines the simple and the

superlative, the functional and the fabulous, a sense of ethic with aesthetic - to offer spacious Apartments, airy Villas and large Row Houses that meet your contemporary residential needs. High on new-age and convenient living solutions, this is where you begin living from your heart.

CONVENIENTLY LOCATED...



Nagpur Airport
25 mins
Just 17 KMs away



Modern School
5 mins
1.1 KMS

Railway Station
15 mins
Just 10.86 KMs away

Poddar International School
5 mins
1.8 KMS



Alexis Hospital
Central India's best multi-
speciality hospital
7 mins
Only 5.5 KMs away

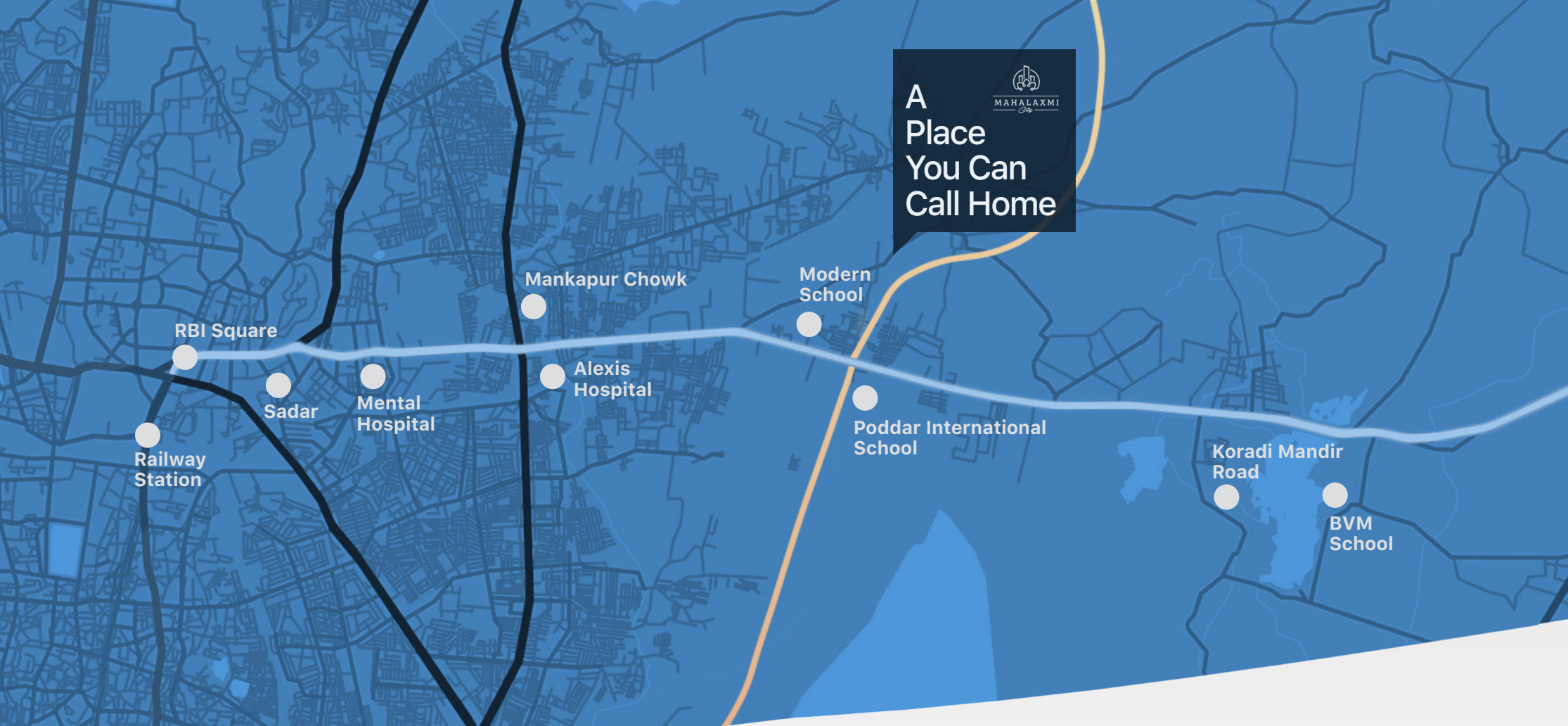
BVM School
11 mins
7 KMS



RBI Square
10 mins
Just 8.6 KMs away

◀
Towards
Nagpur Airport


A
Place
You Can
Call Home



Welcome to
MAHALAXMI CITY



MahaRERA Registration No. P50500045227 | *View Details at maharera.mahaonline.gov.in



VISUAL ARCHITECTURAL IMAGE/ VIEW OF ENTIRE LAYOUT



MAHALAXMI
City





VISUAL ARCHITECTURAL IMAGE/ VIEW OF ENTIRE LAYOUT

- GRANDE EXECUTIVE (4 BHK ROWHOUSE)
- GRANDE (3 BHK ROWHOUSE)
- FELICITA G & F (3 & 3.5 BHK APARTMENT)
- PICCOLO I & H (2 & 2.5 BHK APARTMENTS)
- CRESTA (2,2.5,3 & 3.5 BHK APTS)
- PROPOSED INVENTORY (BUILDING C, D,E)

- 1 Amenity Area
- 2 Commercial Block
- 3 Conveyance Shop
- 4 Amenity Area



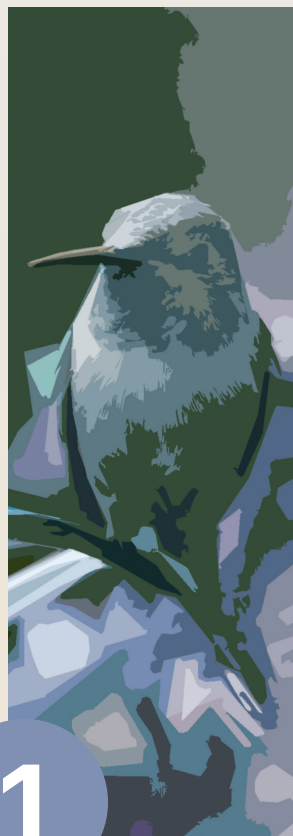
Amenities, with Lifestyle

Life is meaningful when all your dearest people can have the best time. That is why Mahalaxmi City is studded with all amenities that you and your family need for a more enjoyable, comfortable and holistic living. Complete with state-of-the-art planning, installation and safety features.

- Landscaped Garden
- Swimming Pool
- Children's Play Area
- Indoor Game Facility
- Gymnasium
- Multi-Purpose Hall
- 24 X 7 Security
- Power Backup for Common Areas

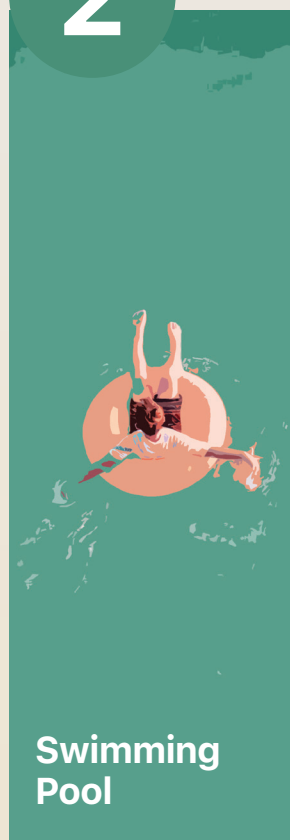
1

**Landscape
Garden** with
aviary



2

**Swimming
Pool**



3

**Children's
Play Area**



4

Gymnasium



MAHALAXMI
City

Facilities, with Thought

Very often, the things that you cannot see make the largest difference. At Mahalaxmi City, we believe that the soul of a home is nourished in a kitchen, and cleansed in a restroom. That is why some of our finest and most thoughtful features are reserved for our most functional purposes – but with a difference.



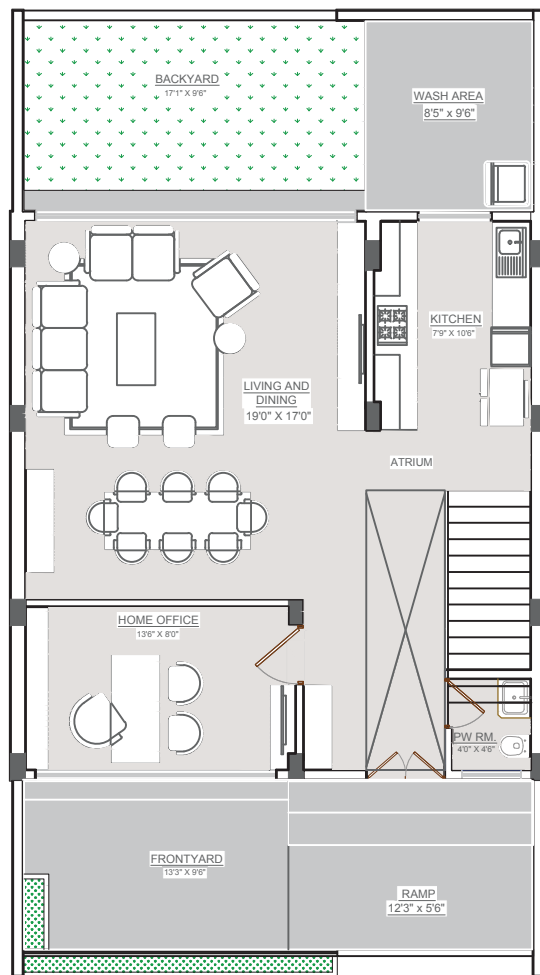


MAHALAXMI
City

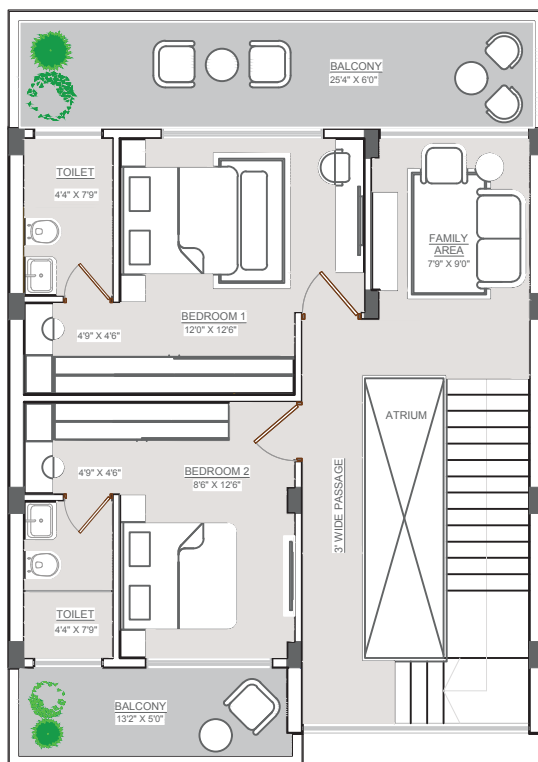
GRANDE EXECUTIVE

— 4 BHK ROW HOUSES —

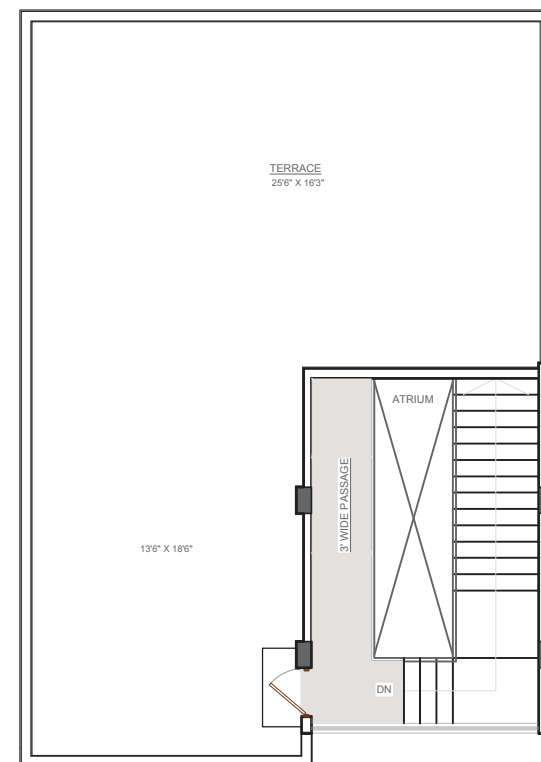
VISUAL ARCHITECTURAL IMAGE/ VIEW



GROUND FLOOR PLAN



FIRST & SECOND FLOOR PLAN



TERRACE FLOOR PLAN

GRANDE EXECUTIVE at Mahalaxmi City

Floor plan of 4 BHK Rowhouse (Carpet Area - 2097 Sqft)

Disclaimer - The Dimension mentioned on these floor plans are as per the plans approved by MHADA. The furniture / fixture etc shown in the image are only indicative and representative (not actual) in nature and are only for the purpose of illustrating / reflecting a possible layout and do not form part of the standard specification, amenities, services, etc. to be provided in respect of the flat. All specification of the flat shall be as per the ATS between the parties. This document may be modified and amended as mentioned in the proforma ATS.





MAHALAXMI
City

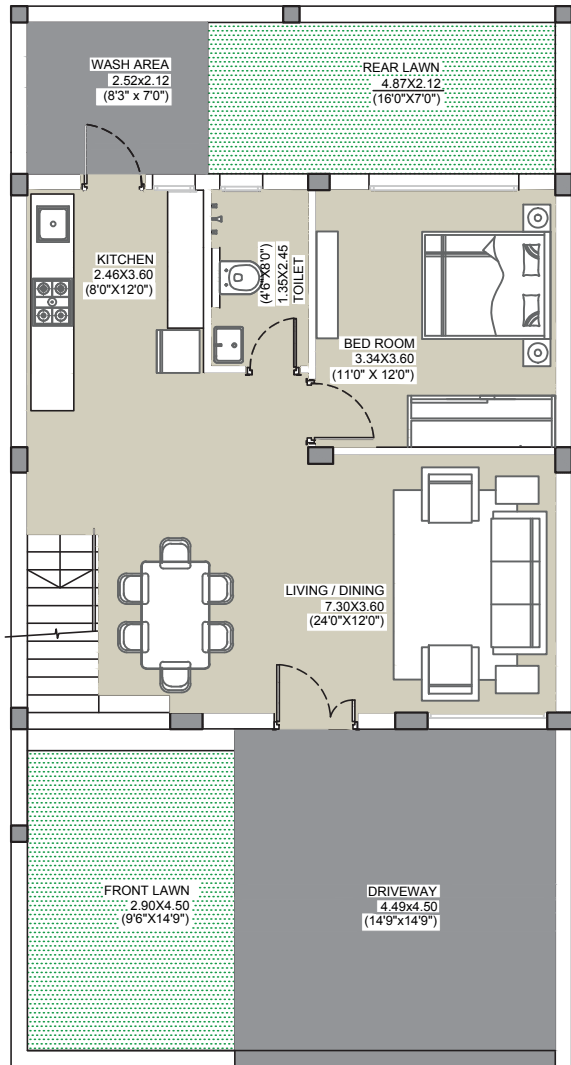


VISUAL ARCHTECTURAL IMAGE/VIEW

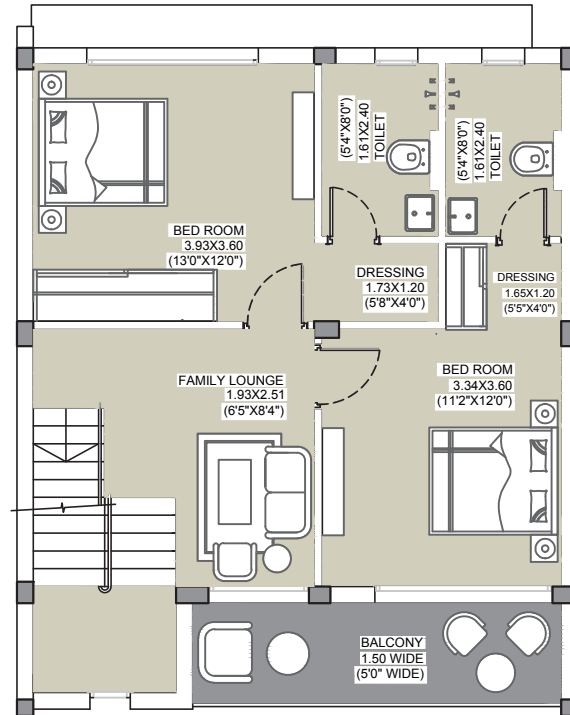
GRANDE
3 BHK ROW HOUSE



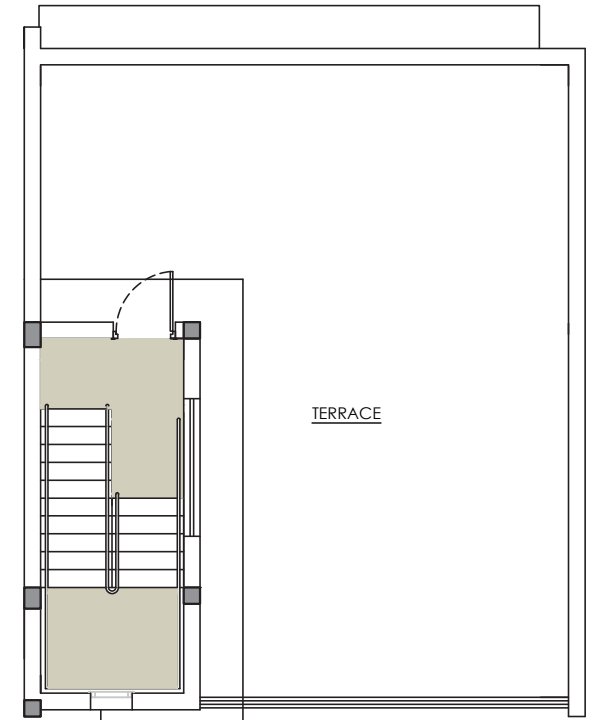
MAHALAXMI
City



GROUND FLOOR PLAN



FIRST FLOOR PLAN



TERRACE FLOOR PLAN

GRANDE at Mahalaxmi City

Floor Plan 3 BHK Rowhouse (Carpet Area - 1192 Sqft)

Disclaimer - The Dimension mentioned on these floor plans are as per the plans approved by NMRDA. The furniture / fixture etc shown in the image are only indicative and representative (not actual) in nature and are only for the purpose of illustrating / reflecting a possible layout and do not form part of the standard specification, amenities, services, etc. to be provided in respect of the flat. All specification of the flat shall be as per the ATS between the parties. This document may be modified and amended as mentioned in the proforma ATS.

MahaRERA Registration No. P50500045227 View details at <https://maharera.mahaonline.gov.in>



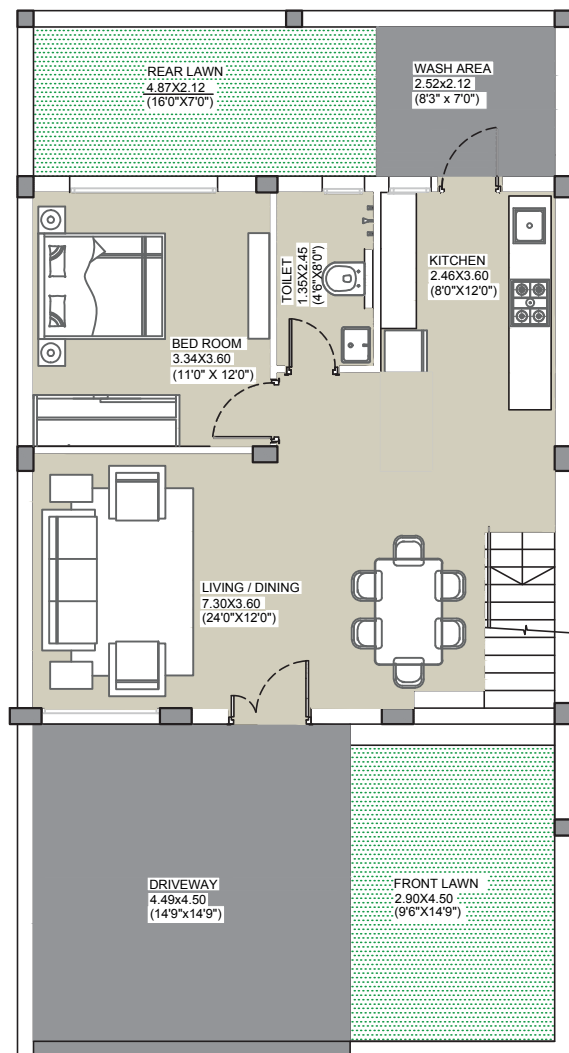


MAHALAXMI
City

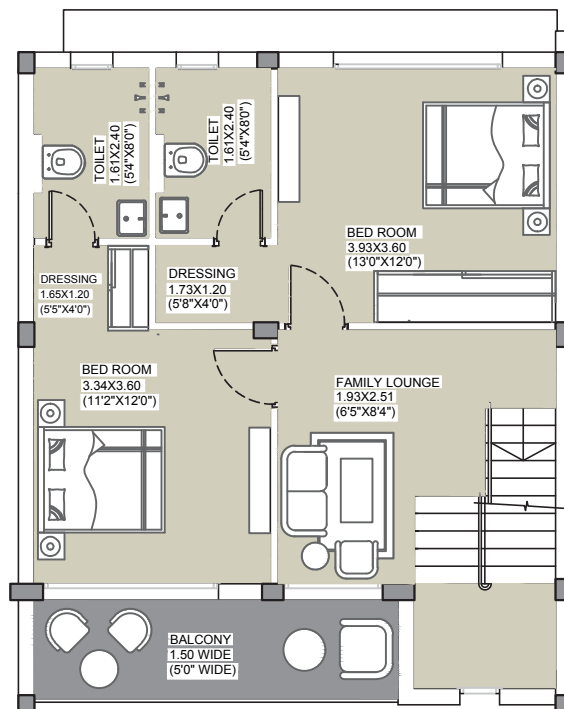


VISUAL ARCHTECTURAL IMAGE/VIEW

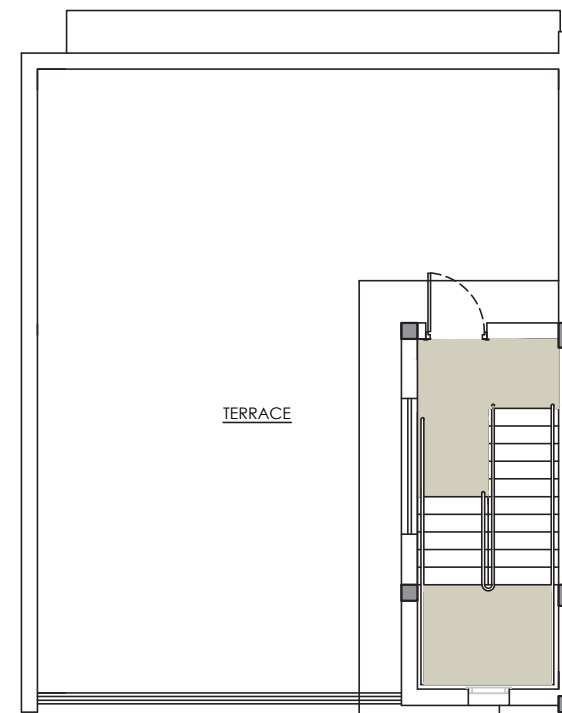
GRANDE
3 BHK ROW HOUSE



GROUND FLOOR PLAN



FIRST FLOOR PLAN



TERRACE FLOOR PLAN

GRANDE at Mahalaxmi City

Floor Plan 3 BHK Rowhouse (Carpet Area - 1192 Sqft)

Disclaimer - The Dimension mentioned on these floor plans are as per the plans approved by NMRDA. The furniture / fixture etc shown in the image are only indicative and representative (not actual) in nature and are only for the purpose of illustrating / reflecting a possible layout and do not form part of the standard specification, amenities, services, etc. to be provided in respect of the flat. All specification of the flat shall be as per the ATS between the parties. This document may be modified and amended as mentioned in the proforma ATS.



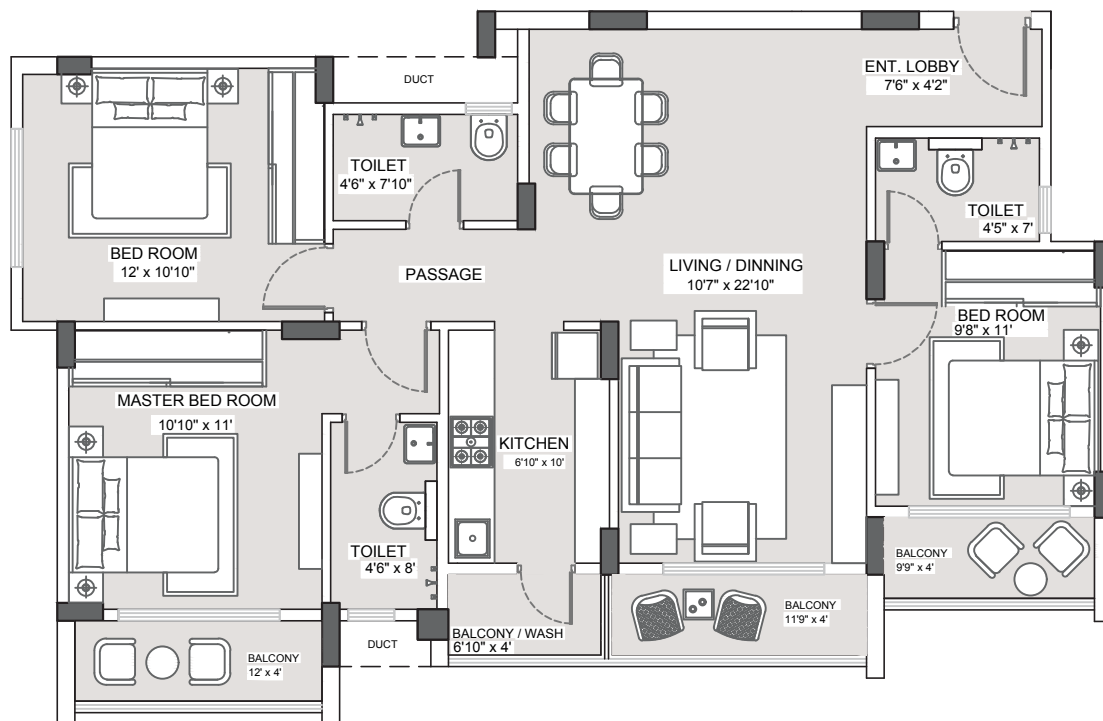


MAHALAXMI
City



VISUAL ARCHTECTORAL IMAGE/VIEW

FELICITA
3 BHK APARTMENTS



FELICITA at Mahalaxmi City

Typical Floor Plan 3 BHK (Carpet Area - 940 Sqft)

(Typical floor plan of Block-17 (G) for unit no. 401,501,601,701 And (F) for unit no. 501,601,701)

Disclaimer - The Dimension mentioned on these floor plans are as per the plans approved by NMRDA. The furniture / fixture etc shown in the image are only indicative and representative (not actual) in nature and are only for the purpose of illustrating / reflecting a possible layout and do not form part of the standard specification, amenities, services, etc. to be provided in respect of the flat. All specification of the flat shall be as per the ATS between the parties. This document may be modified and amended as mentioned in the proforma ATS.



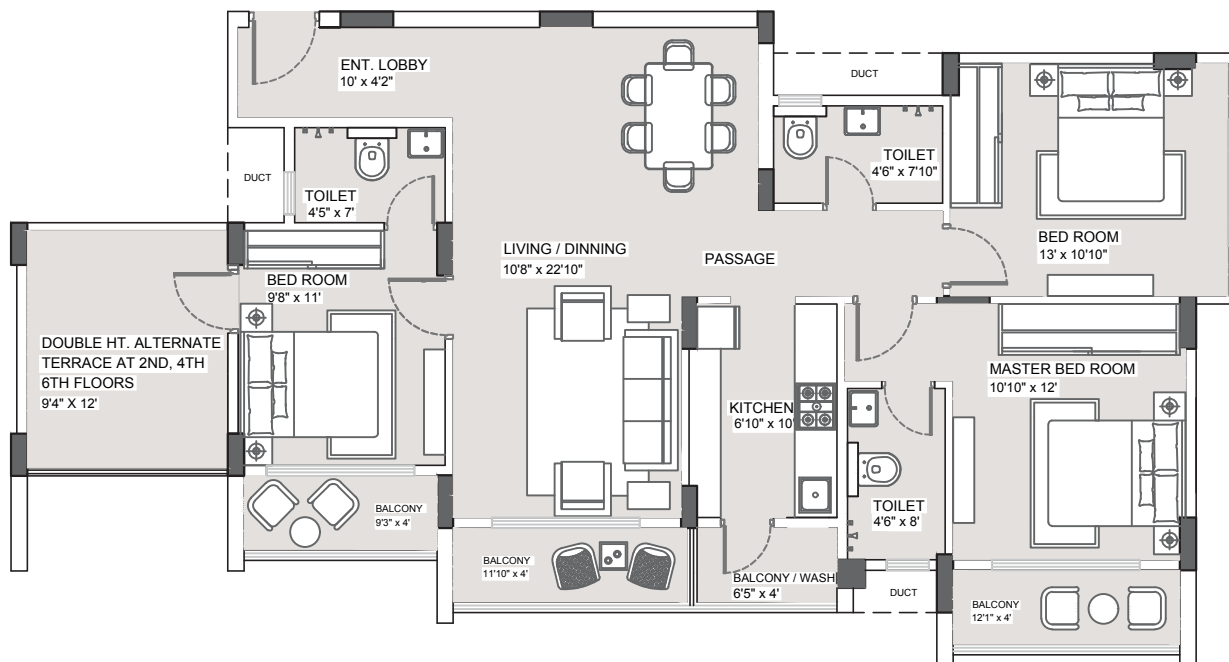


MAHALAXMI
City



VISUAL ARCHTECTURAL IMAGE/VIEW

FELICITA
3 BHK APARTMENTS



FELICITA at Mahalaxmi City

Typical Floor Plan 3 BHK (Carpet Area - 950 Sqft)

(Typical floor plan of Block-17 (G) for unit no. 404,504,604,704) And (F) for unit no. 504,604,704)

Disclaimer - The Dimension mentioned on these floor plans are as per the plans approved by NMRDA. The furniture / fixture etc shown in the image are only indicative and representative (not actual) in nature and are only for the purpose of illustrating / reflecting a possible layout and do not form part of the standard specification, amenities, services, etc. to be provided in respect of the flat. All specification of the flat shall be as per the ATS between the parties. This document may be modified and amended as mentioned in the proforma ATS.



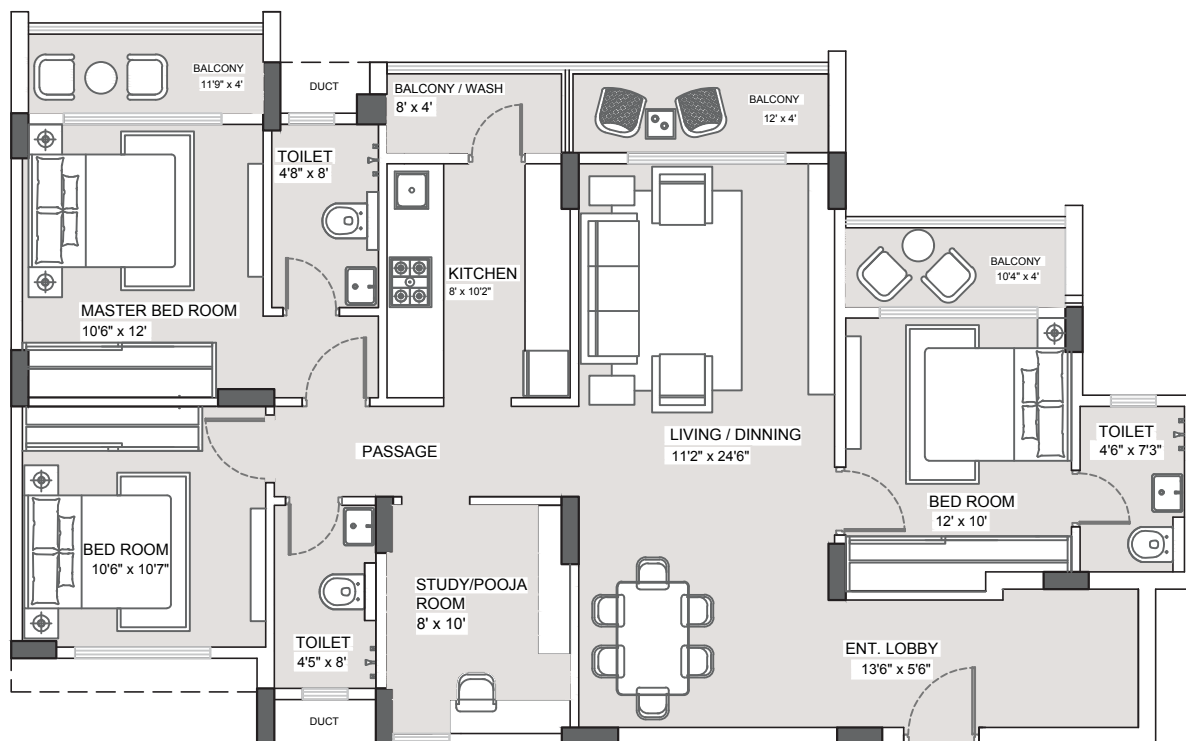


MAHALAXMI
City



VISUAL ARCHTECTURAL IMAGE/VIEW

FELICITA
3.5 BHK APARTMENTS



FELICITA at Mahalaxmi City

Typical Floor Plan 3.5 BHK (Carpet Area -1090 Sqft)

(Typical floor plan of Block-17 (G) for unit no. 402,502,602,702 And (F) for unit no. 502,602,702)

Disclaimer - The Dimension mentioned on these floor plans are as per the plans approved by NMRDA. The furniture / fixture etc shown in the image are only indicative and representative (not actual) in nature and are only for the purpose of illustrating / reflecting a possible layout and do not form part of the standard specification, amenities, services, etc. to be provided in respect of the flat. All specification of the flat shall be as per the ATS between the parties. This document may be modified and amended as mentioned in the proforma ATS.



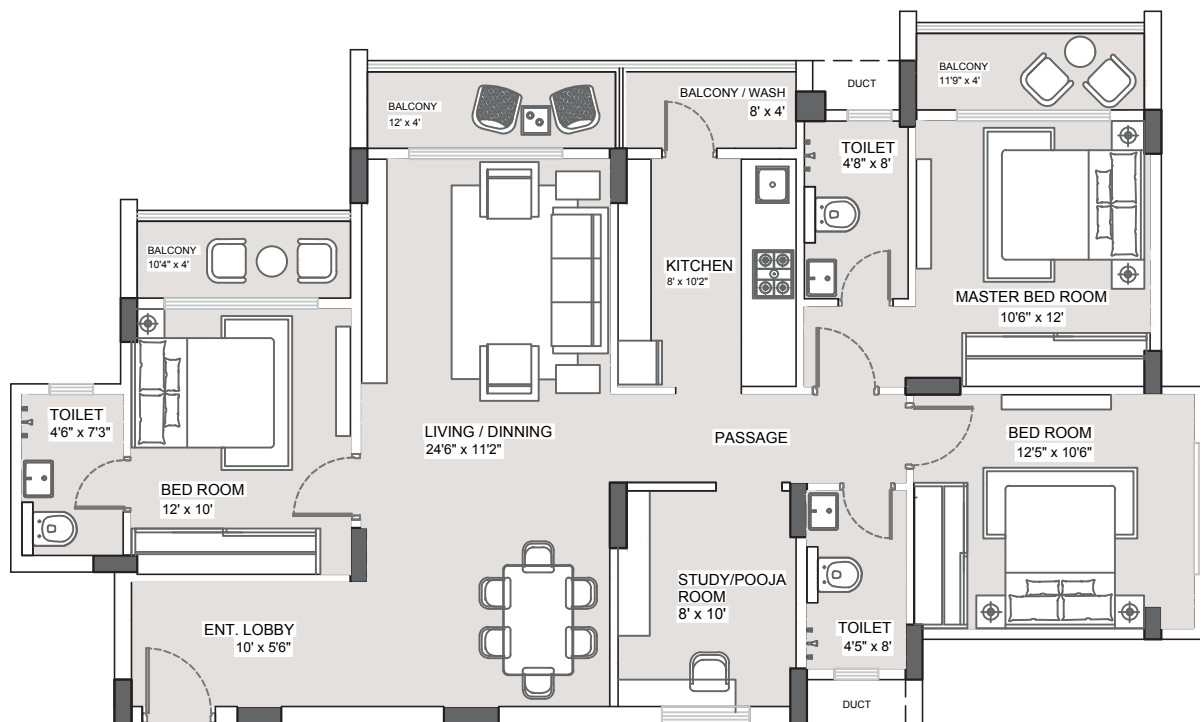


MAHALAXMI
City



VISUAL ARCHTECTURAL IMAGE/VIEW

FELICITA
3.5 BHK APARTMENTS



FELICITA at Mahalaxmi City

Typical Floor Plan 3.5 BHK (Carpet Area - 1072 Sqft)

(Typical floor plan of Block-17 (G) for unit no. 403,503,603,703) And (F) for unit no. 503,603,703)

Disclaimer - The Dimension mentioned on these floor plans are as per the plans approved by NMRDA. The furniture / fixture etc shown in the image are only indicative and representative (not actual) in nature and are only for the purpose of illustrating / reflecting a possible layout and do not form part of the standard specification, amenities, services, etc. to be provided in respect of the flat. All specification of the flat shall be as per the ATS between the parties. This document may be modified and amended as mentioned in the proforma ATS.





MAHALAXMI
City

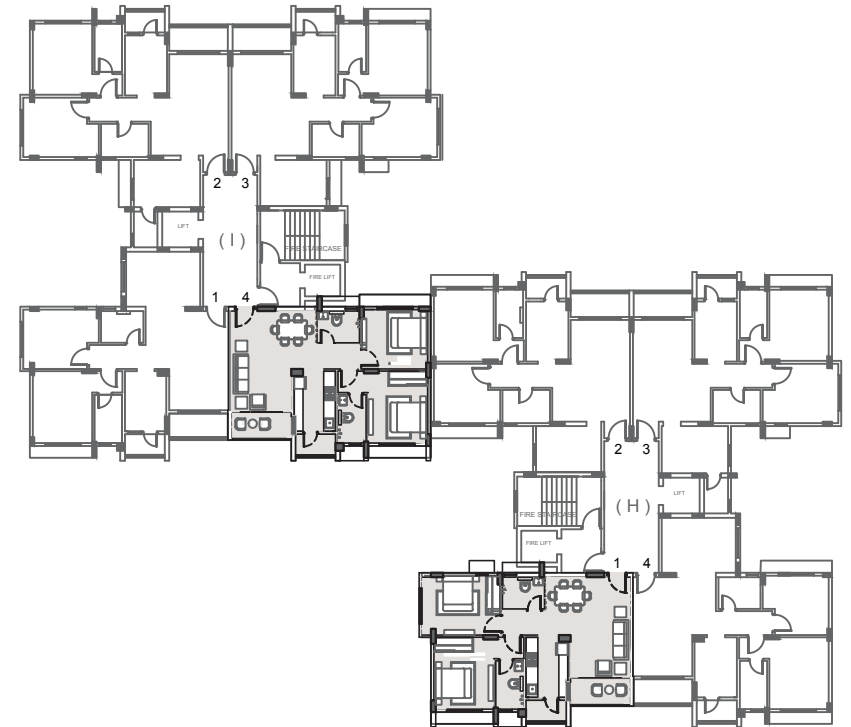
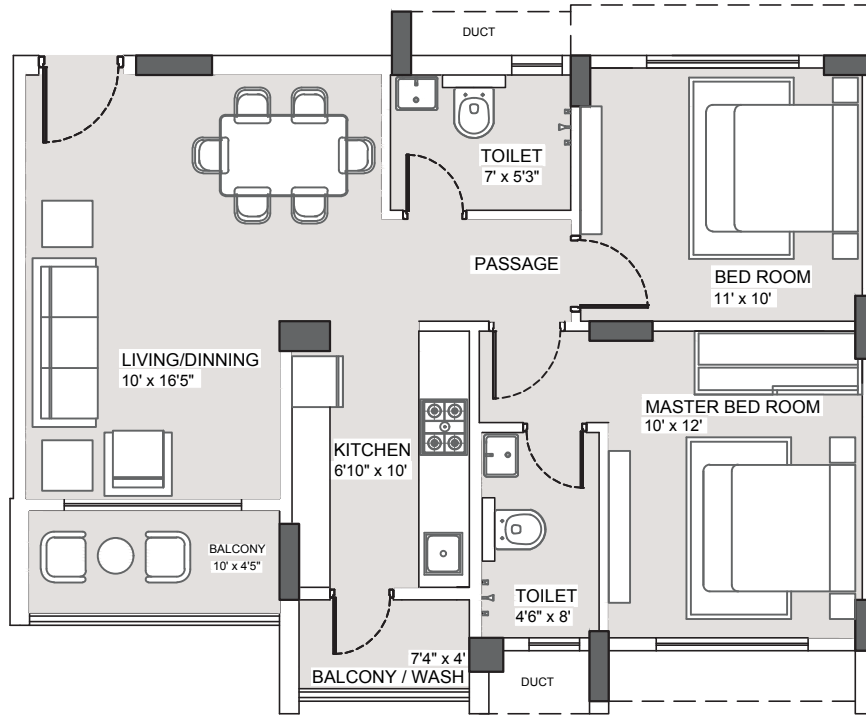


VISUAL ARCHTECTURAL IMAGE/VIEW

PICCOLO
2 BHK APARTMENTS



MAHALAXMI
City



PICCOLO at Mahalaxmi City

Typical Floor Plan 2 BHK (Carpet area - 643 Sqft)

(Typical floor plan of Block-17 (I) For unit No.-404,504,604,704 And (H) for unit no. 501,601,701)

Disclaimer - The Dimension mentioned on these floor plans are as per the plans approved by NMRDA. The furniture / fixture etc shown in the image are only indicative and representative (not actual) in nature and are only for the purpose of illustrating / reflecting a possible layout and do not form part of the standard specification, amenities, services, etc. to be provided in respect of the flat. All specification of the flat shall be as per the ATS between the parties. This document may be modified and amended as mentioned in the proforma ATS.

MahaRERA Registration No. P50500045227 View details at
<https://maharera.mahaonline.gov.in>





MAHALAXMI
City

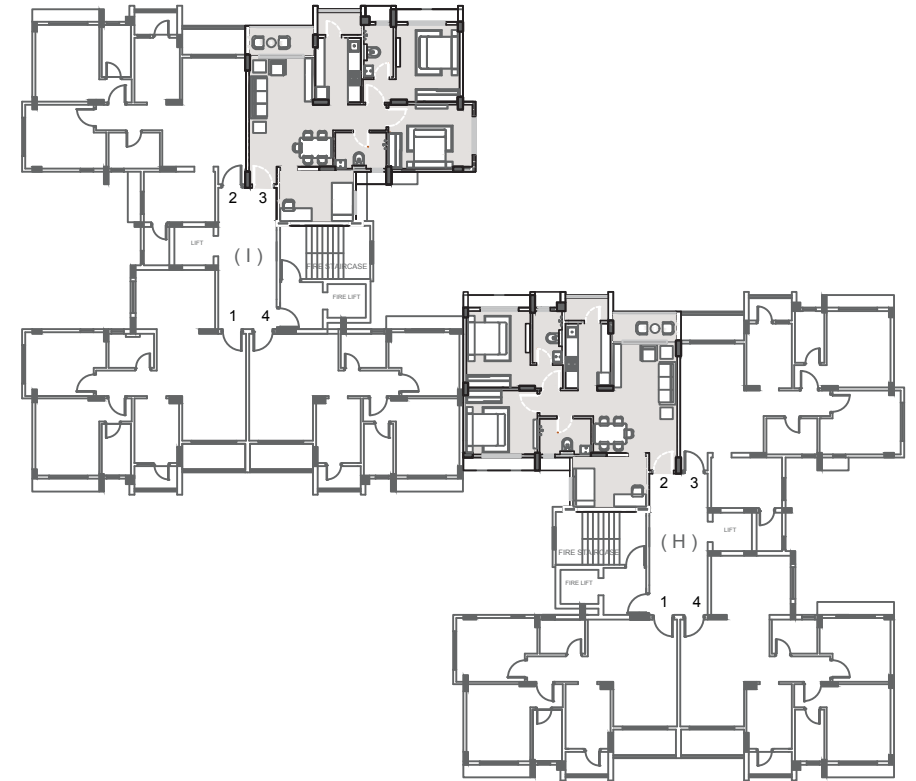
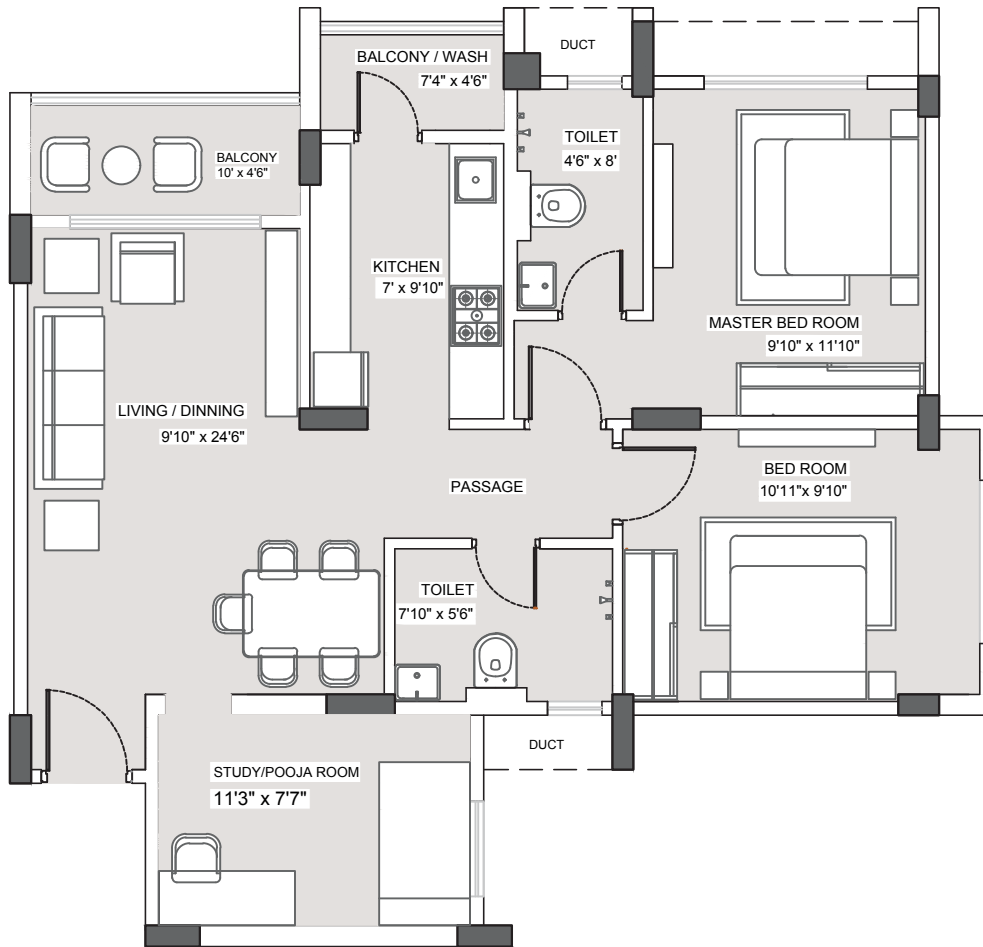


VISUAL ARCHTECTURAL IMAGE/VIEW

PICCOLO
2.5 BHK APARTMENTS



MAHALAXMI
City



PICCOLO at Mahalaxmi City

Typical Floor Plan 2.5 BHK (Carpet Area - 752Sqft)

(Typical floor plan of Block17 (I) For unit no. 403,503,603,703 And (H) For unit no. 502,602,702)

Disclaimer - The Dimension mentioned on these floor plans are as per the plans approved by NMRDA. The furniture / fixture etc shown in the image are only indicative and representative (not actual) in nature and are only for the purpose of illustrating / reflecting a possible layout and do not form part of the standard specification, amenities, services, etc. to be provided in respect of the flat. All specification of the flat shall be as per the ATS between the parties. This document may be modified and amended as mentioned in the proforma ATS.

MahaRERA Registration No. P50500045227 View details at
<https://maharera.mahaonline.gov.in>





MAHALAXMI
City

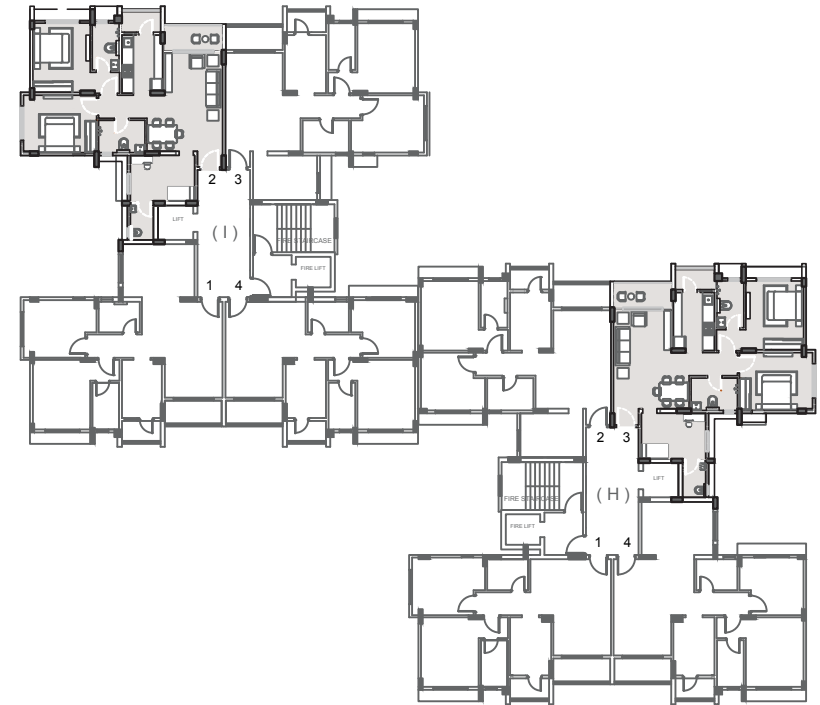
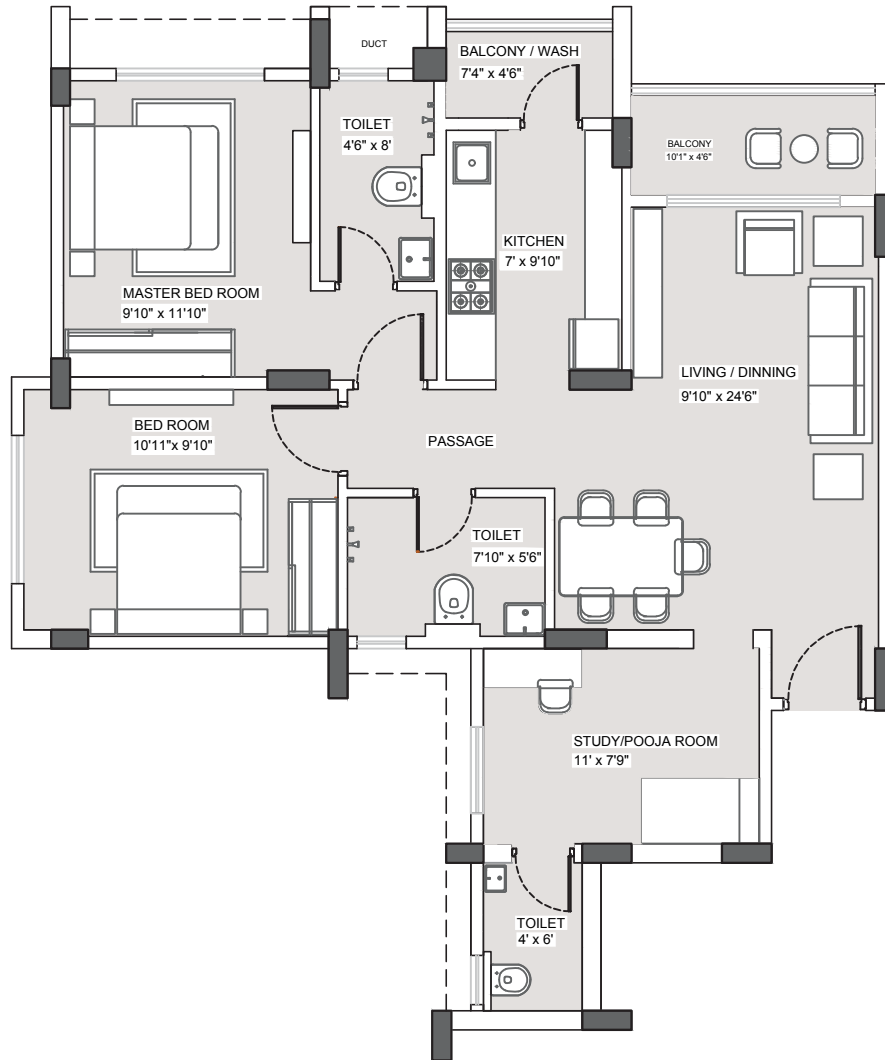


VISUAL ARCHTECTURAL IMAGE/VIEW

PICCOLO
2.5 BHK APARTMENTS



MAHALAXMI
City



PICCOLO at Mahalaxmi City

Typical Floor Plan 2.5 BHK (Carpet area - 778 Sqft)

(Typical floor plan of Block-17 (I) For unit No.-402,502,602,702) And (H) for unit no. 503,603,703)

Disclaimer - The Dimension mentioned on these floor plans are as per the plans approved by NMRDA. The furniture / fixture etc shown in the image are only indicative and representative (not actual) in nature and are only for the purpose of illustrating / reflecting a possible layout and do not form part of the standard specification, amenities, services, etc. to be provided in respect of the flat. All specification of the flat shall be as per the ATS between the parties. This document may be modified and amended as mentioned in the proforma ATS.



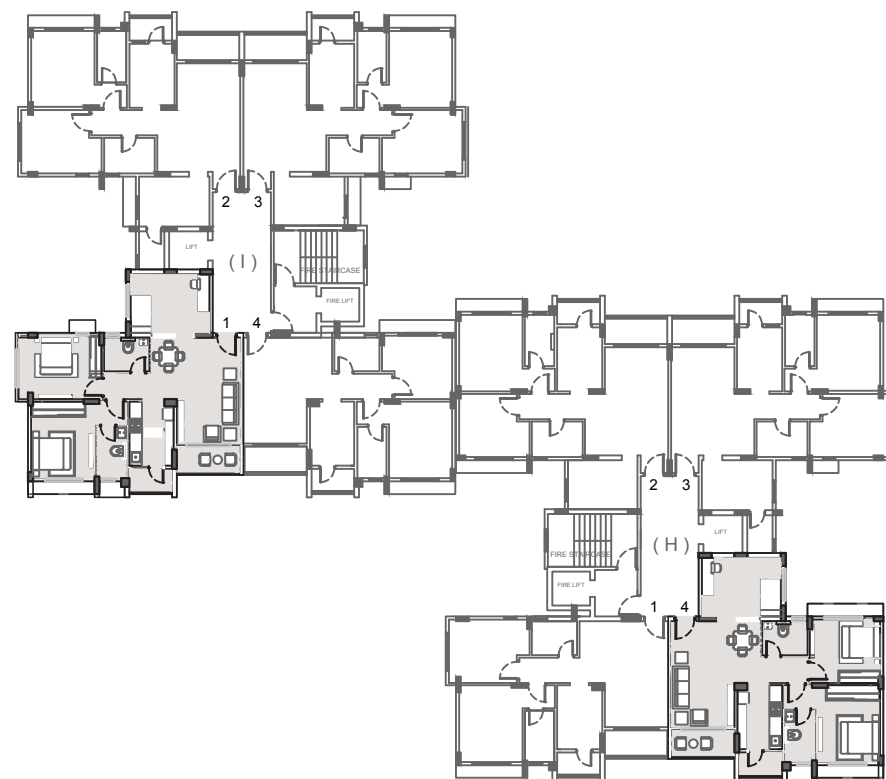
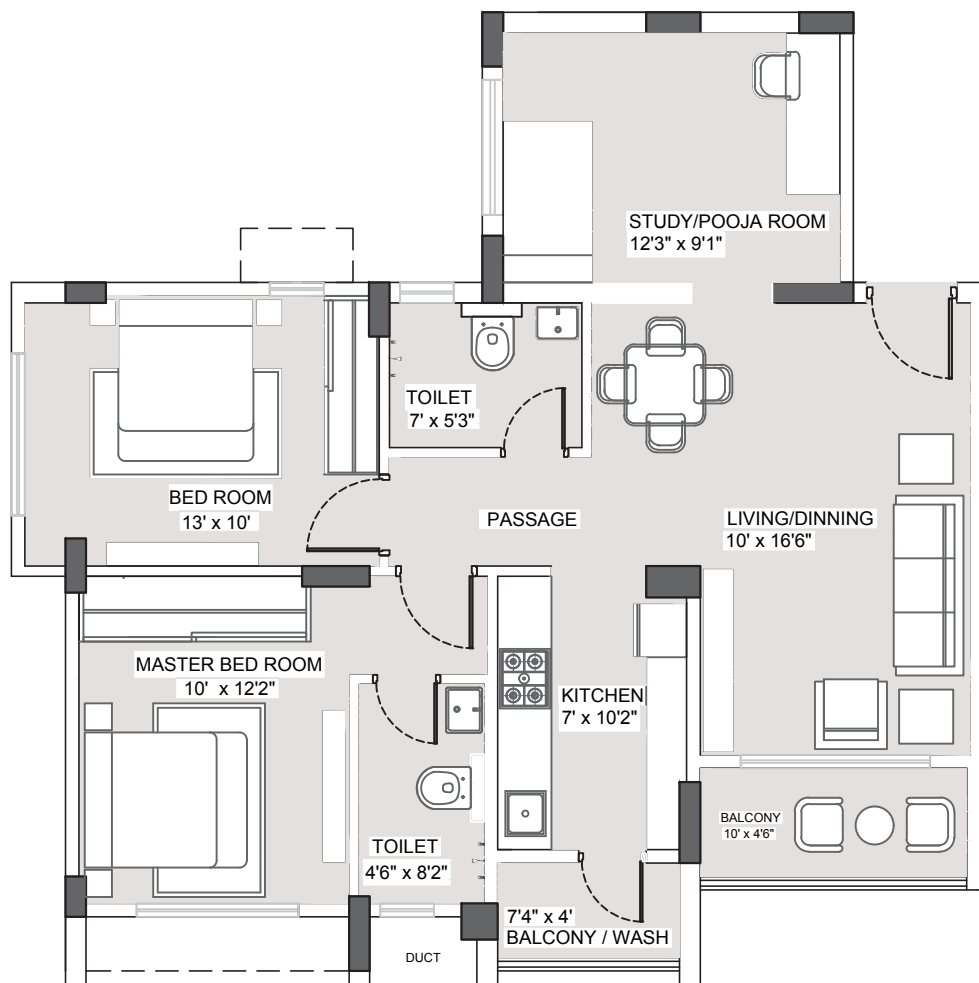


MAHALAXMI
City



VISUAL ARCHTECTURAL IMAGE/VIEW

PICCOLO
2.5 BHK APARTMENTS



PICCOLO at Mahalaxmi City

Typical Floor Plan 2.5 BHK (Carpet Area - 764 Sqft)

(Typical floor plan of Block-17 (I) for unit no. 401,501,601,701 And (H) for unit no. 504,604,704)

Disclaimer - The Dimension mentioned on these floor plans are as per the plans approved by NMRDA. The furniture / fixture etc shown in the image are only indicative and representative (not actual) in nature and are only for the purpose of illustrating / reflecting a possible layout and do not form part of the standard specification, amenities, services, etc. to be provided in respect of the flat. All specification of the flat shall be as per the ATS between the parties. This document may be modified and amended as mentioned in the proforma ATS.

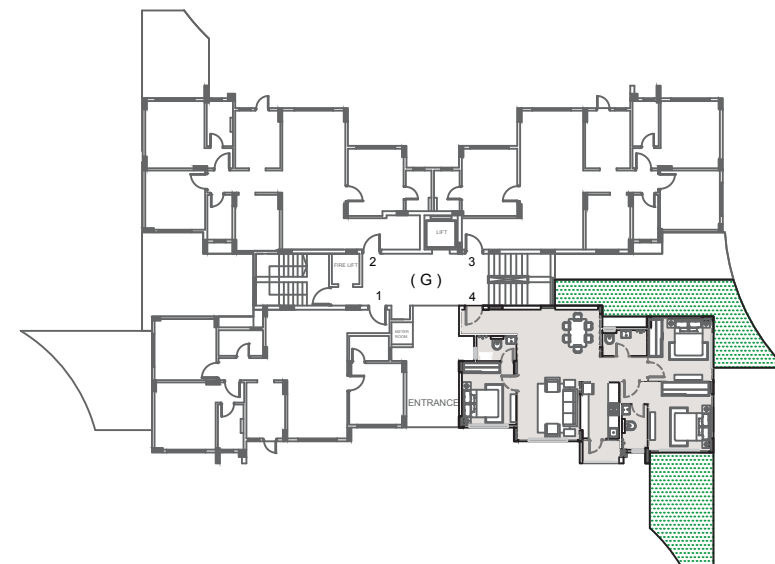
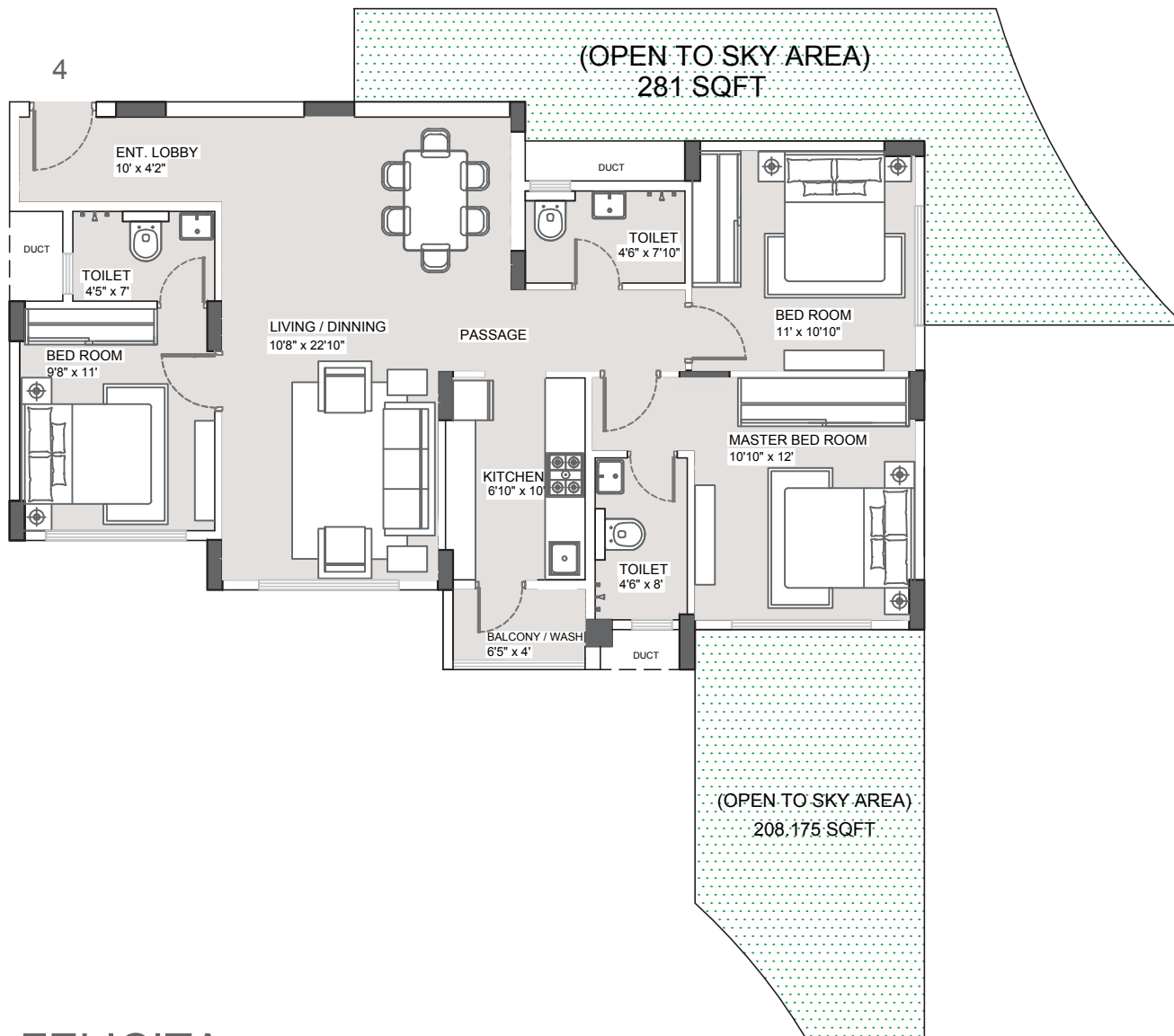


MAHALAXMI
City



VISUAL ARCHTECTURAL IMAGE/VIEW

FELICITA
3 BHK APARTMENTS



FELICITA at Mahalaxmi City

Floor Plan 3 BHK (Carpet Area - 950 Sqft)

(Floor plan of Block-17 (G) for unit no. 004)

Disclaimer - The Dimension mentioned on these floor plans are as per the plans approved by NMRDA. The furniture / fixture etc shown in the image are only indicative and representative (not actual) in nature and are only for the purpose of illustrating / reflecting a possible layout and do not form part of the standard specification, amenities, services, etc. to be provided in respect of the flat. All specification of the flat shall be as per the ATS between the parties. This document may be modified and amended as mentioned in the proforma ATS.



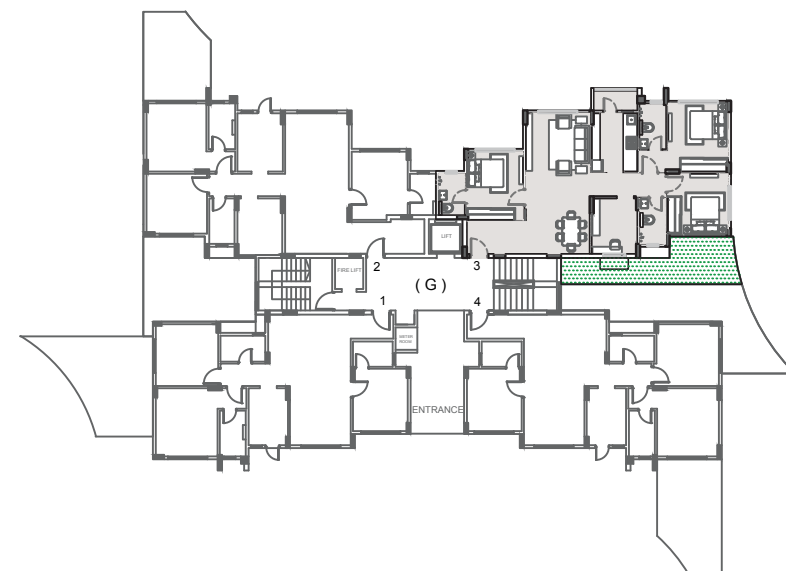
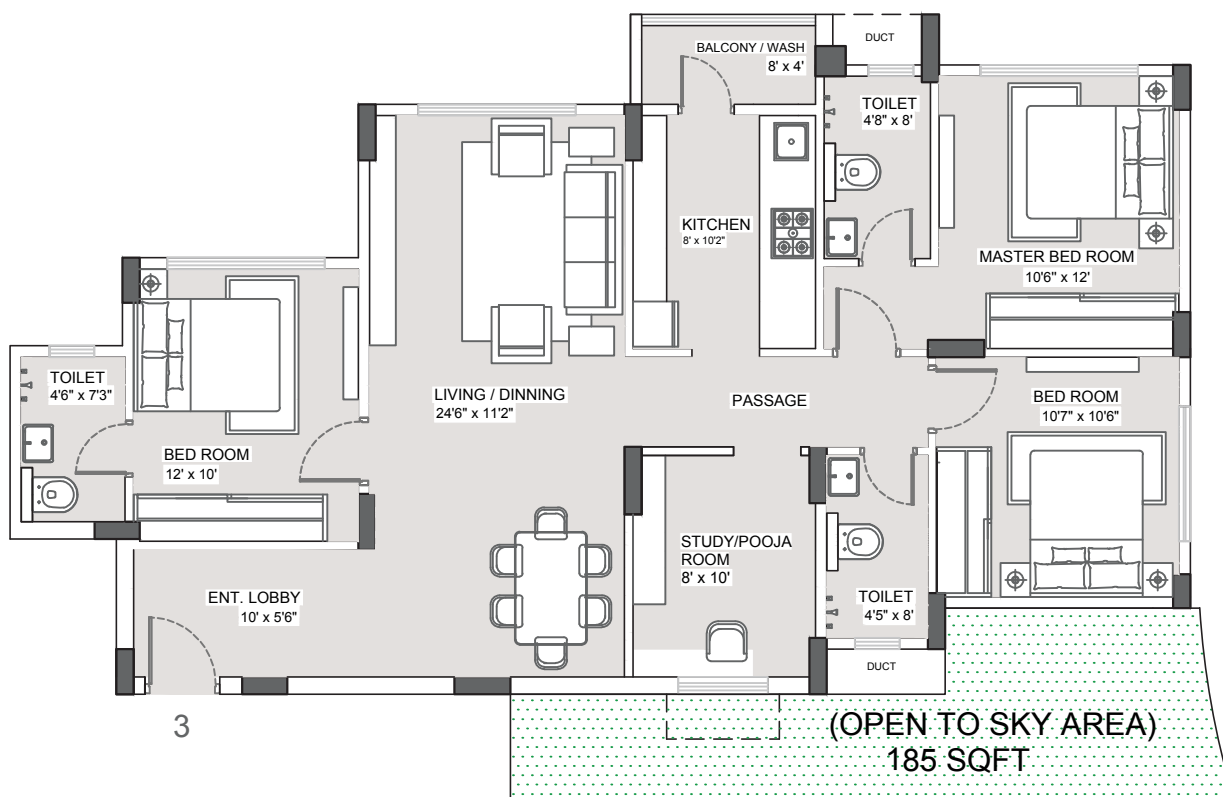


MAHALAXMI
City



VISUAL ARCHITECTURAL IMAGE/VIEW

FELICITA
3.5 BHK APARTMENTS



FELICITA at Mahalaxmi City

Floor Plan 3.5 BHK (Carpet Area - 1070 Sqft)

(Floor plan of Block-17 (G) for unit no. 003)

Disclaimer - The Dimension mentioned on these floor plans are as per the plans approved by NMRDA. The furniture / fixture etc shown in the image are only indicative and representative (not actual) in nature and are only for the purpose of illustrating / reflecting a possible layout and do not form part of the standard specification, amenities, services, etc. to be provided in respect of the flat. All specification of the flat shall be as per the ATS between the parties. This document may be modified and amended as mentioned in the proforma ATS.

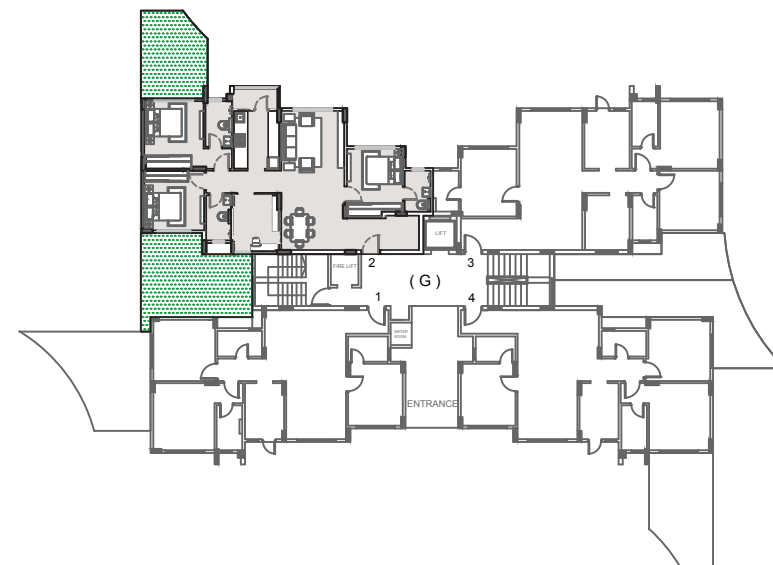
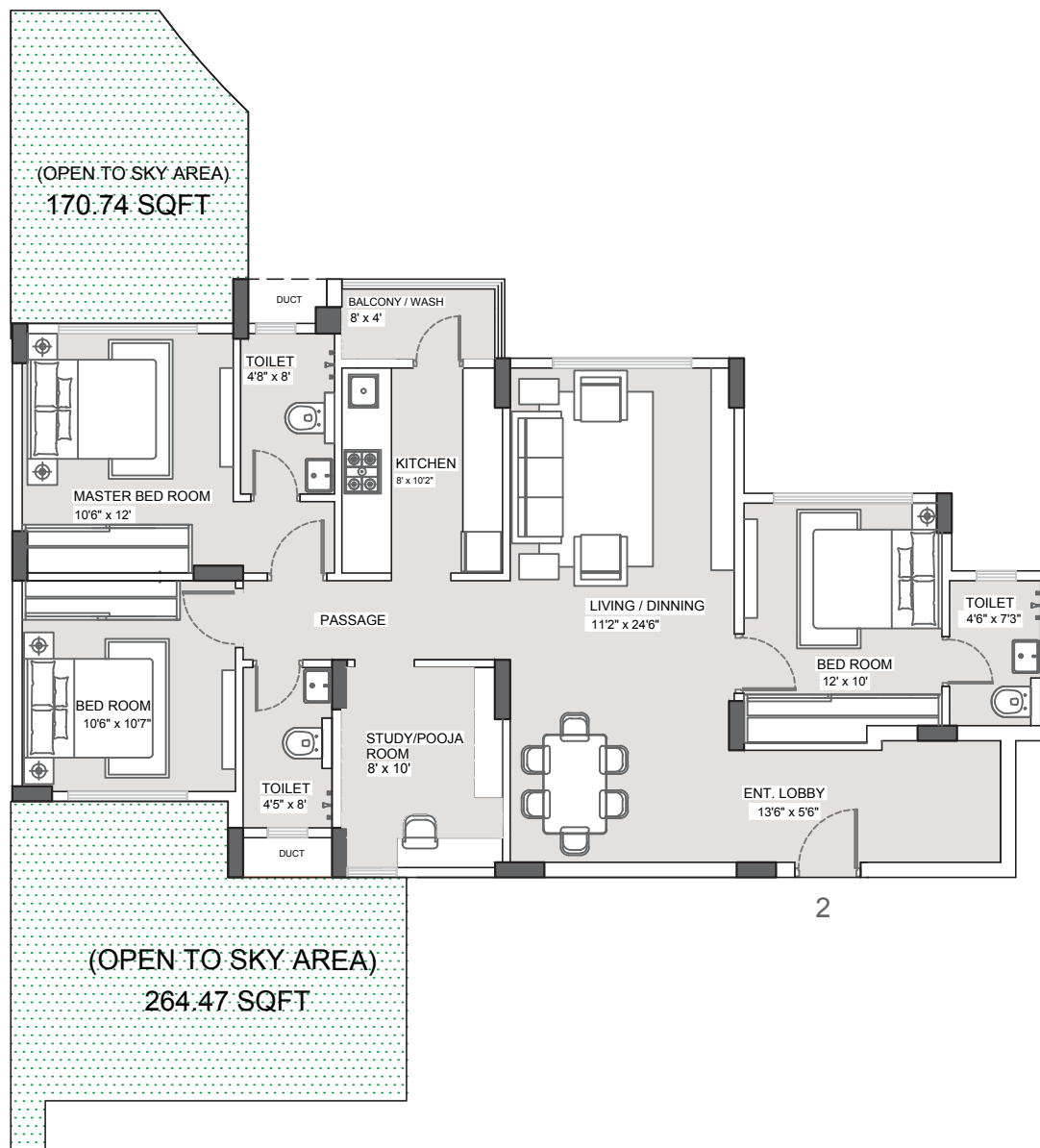


MAHALAXMI
City



VISUAL ARCHTECTURAL IMAGE/VIEW

FELICITA
3.5 BHK APARTMENTS



FELICITA at Mahalaxmi City

Floor Plan 3.5 BHK (Carpet Area - 1090 Sqft)

(Typical floor plan of Block-17 (G) for unit no. 002)

Disclaimer - The Dimension mentioned on these floor plans are as per the plans approved by NMRDA. The furniture / fixture etc shown in the image are only indicative and representative (not actual) in nature and are only for the purpose of illustrating / reflecting a possible layout and do not form part of the standard specification, amenities, services, etc. to be provided in respect of the flat. All specification of the flat shall be as per the ATS between the parties. This document may be modified and amended as mentioned in the proforma ATS.



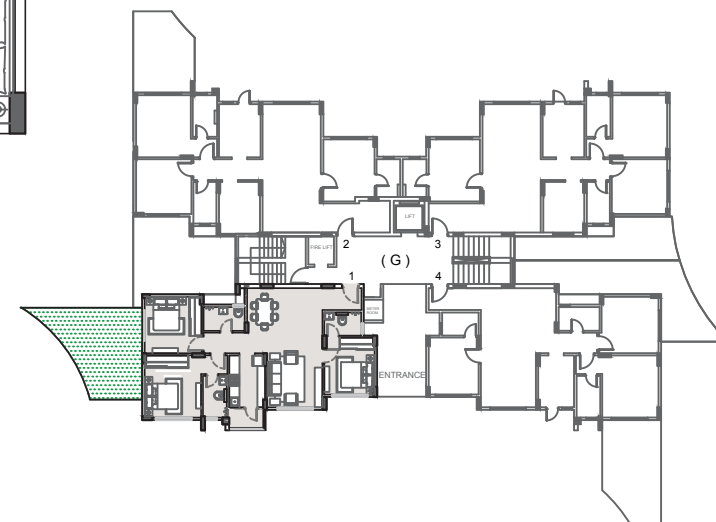
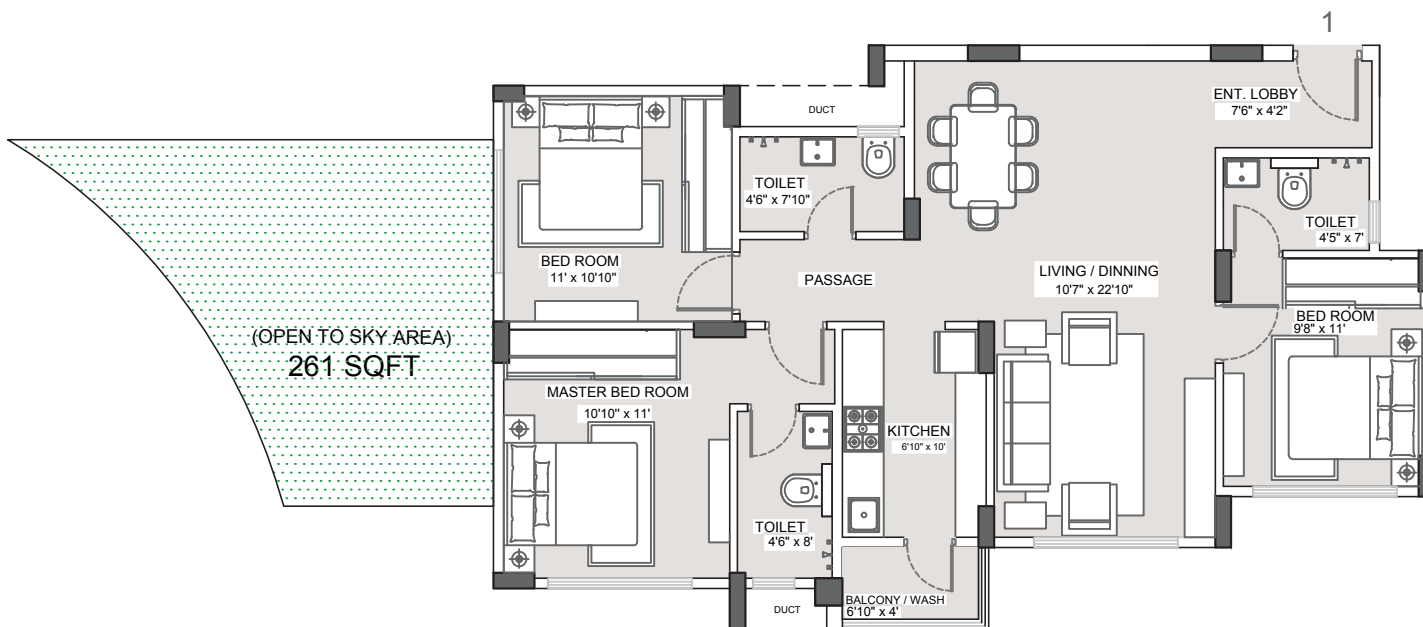
MAHALAXMI
City



VISUAL ARCHITECTURAL IMAGE/VIEW

FELICITA

3 BHK APARTMENTS



FELICITA at Mahalaxmi City

Floor Plan 3 BHK (Carpet Area - 940 Sqft)

(Floor plan of Block-17 (G) for unit no. 001)

Disclaimer - The Dimension mentioned on these floor plans are as per the plans approved by NMRDA. The furniture / fixture etc shown in the image are only indicative and representative (not actual) in nature and are only for the purpose of illustrating / reflecting a possible layout and do not form part of the standard specification, amenities, services, etc. to be provided in respect of the flat. All specification of the flat shall be as per the ATS between the parties. This document may be modified and amended as mentioned in the proforma ATS.



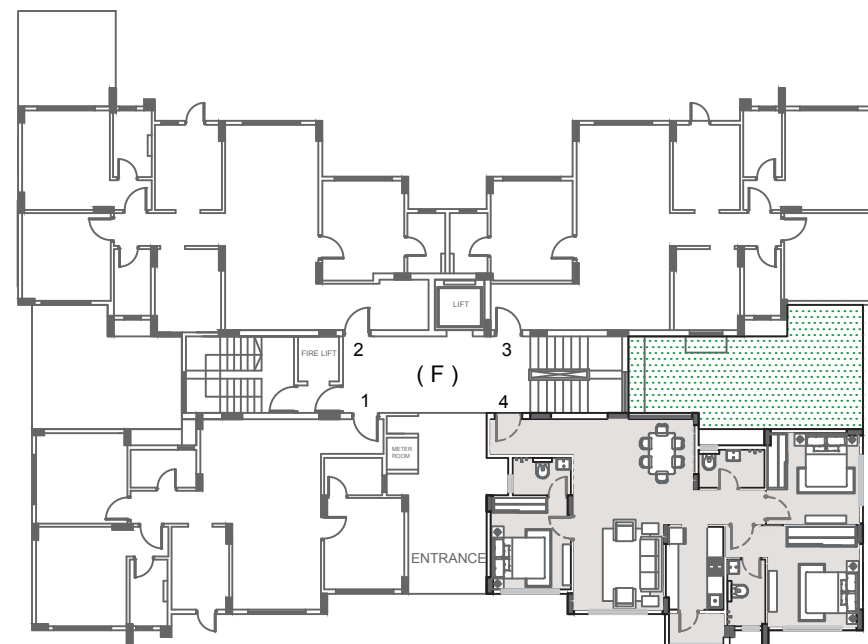
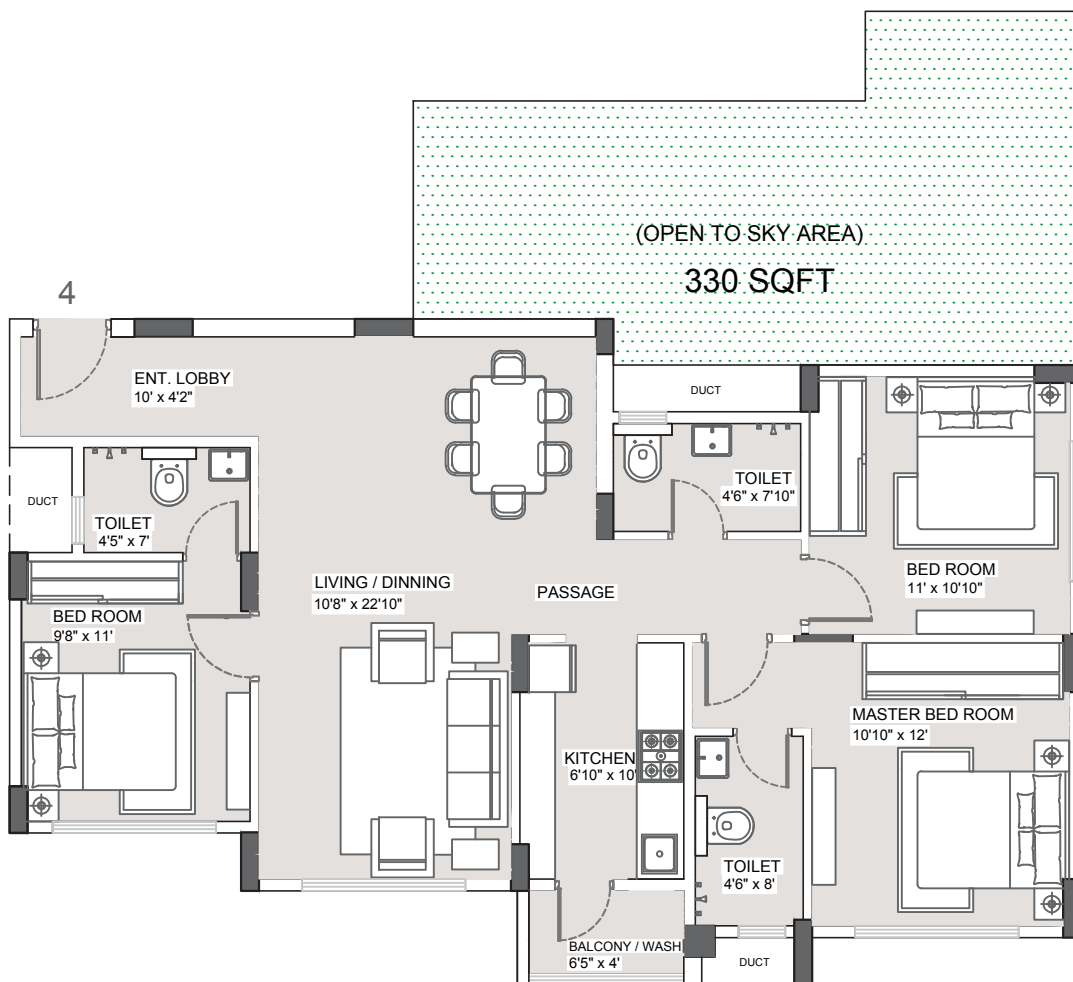


MAHALAXMI
City



VISUAL ARCHITECTURAL IMAGE/VIEW

FELICITA
3 BHK APARTMENTS



FELICITA at Mahalaxmi City

Floor Plan 3 BHK (Carpet Area - 950 Sqft)

(Floor plan of Block-17 (F) for unit no. 004)

Disclaimer - The Dimension mentioned on these floor plans are as per the plans approved by NMRDA. The furniture / fixture etc shown in the image are only indicative and representative (not actual) in nature and are only for the purpose of illustrating / reflecting a possible layout and do not form part of the standard specification, amenities, services, etc. to be provided in respect of the flat. All specification of the flat shall be as per the ATS between the parties. This document may be modified and amended as mentioned in the proforma ATS.



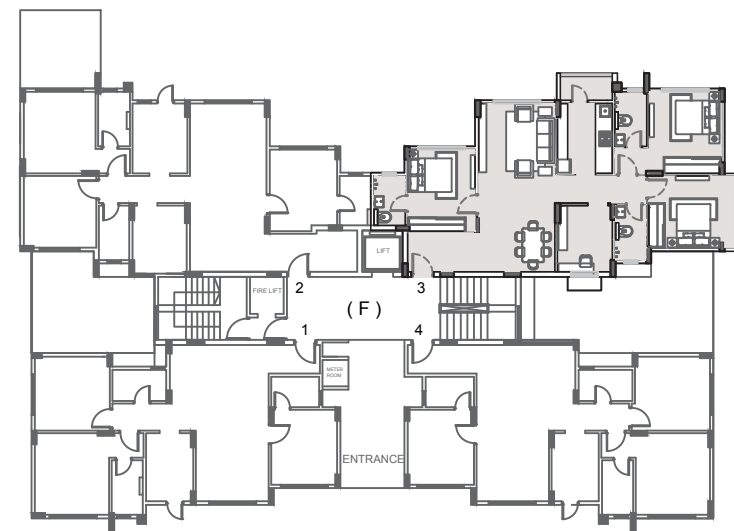
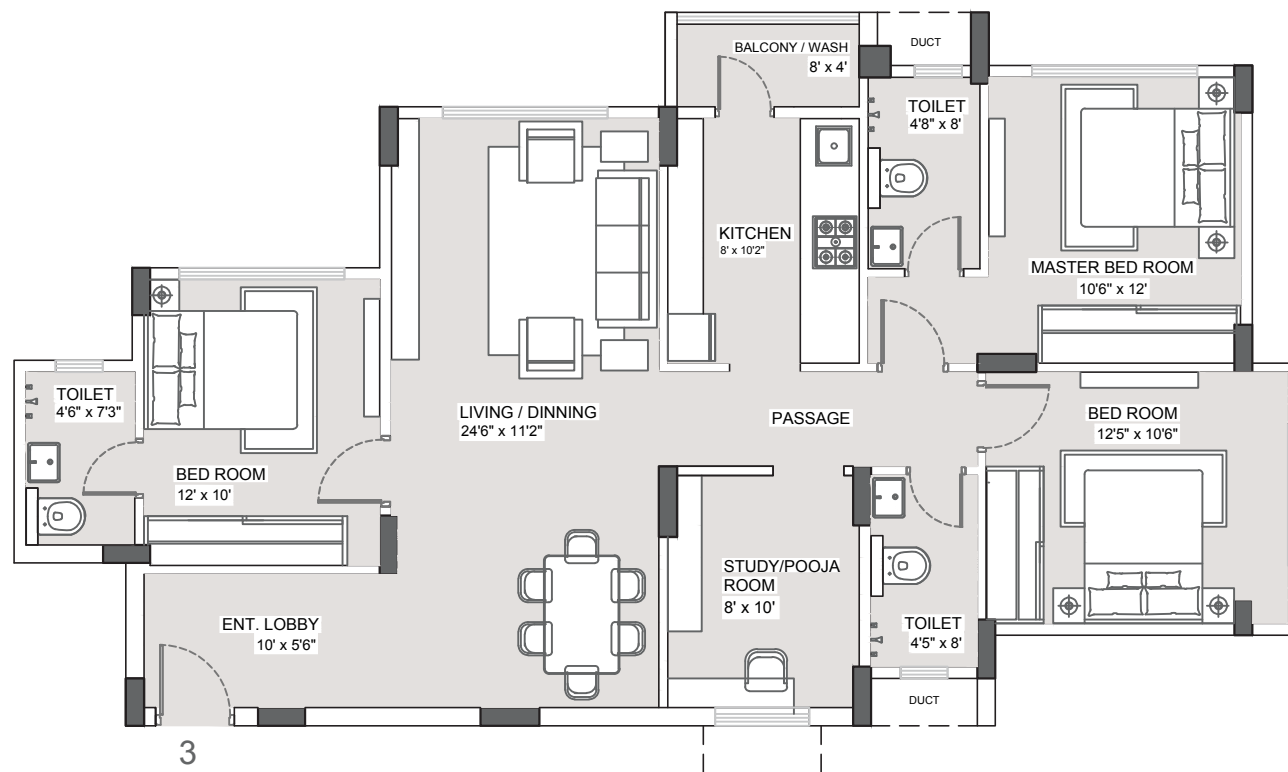


MAHALAXMI
City



VISUAL ARCHTECTURAL IMAGE/VIEW

FELICITA
3.5 BHK APARTMENTS



FELICITA at Mahalaxmi City

Floor Plan 3.5 BHK (Carpet Area - 1072 Sqft)

(Floor plan of Block-17 (F) for unit no. 003)

Disclaimer - The Dimension mentioned on these floor plans are as per the plans approved by NMRDA. The furniture / fixture etc shown in the image are only indicative and representative (not actual) in nature and are only for the purpose of illustrating / reflecting a possible layout and do not form part of the standard specification, amenities, services, etc. to be provided in respect of the flat. All specification of the flat shall be as per the ATS between the parties. This document may be modified and amended as mentioned in the proforma ATS.

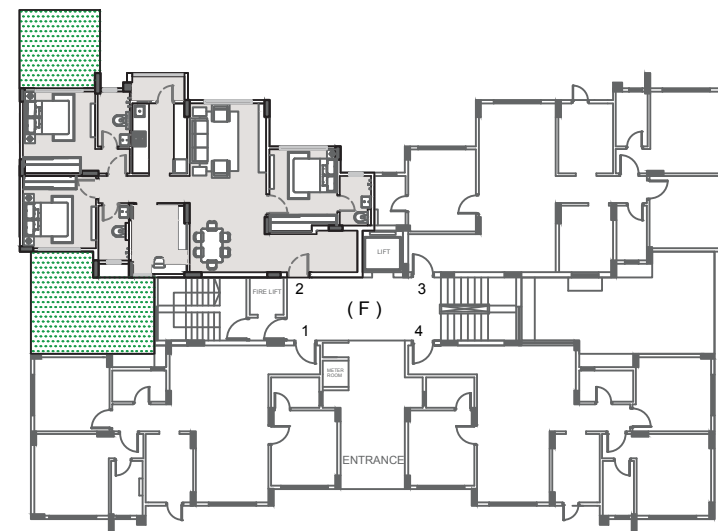
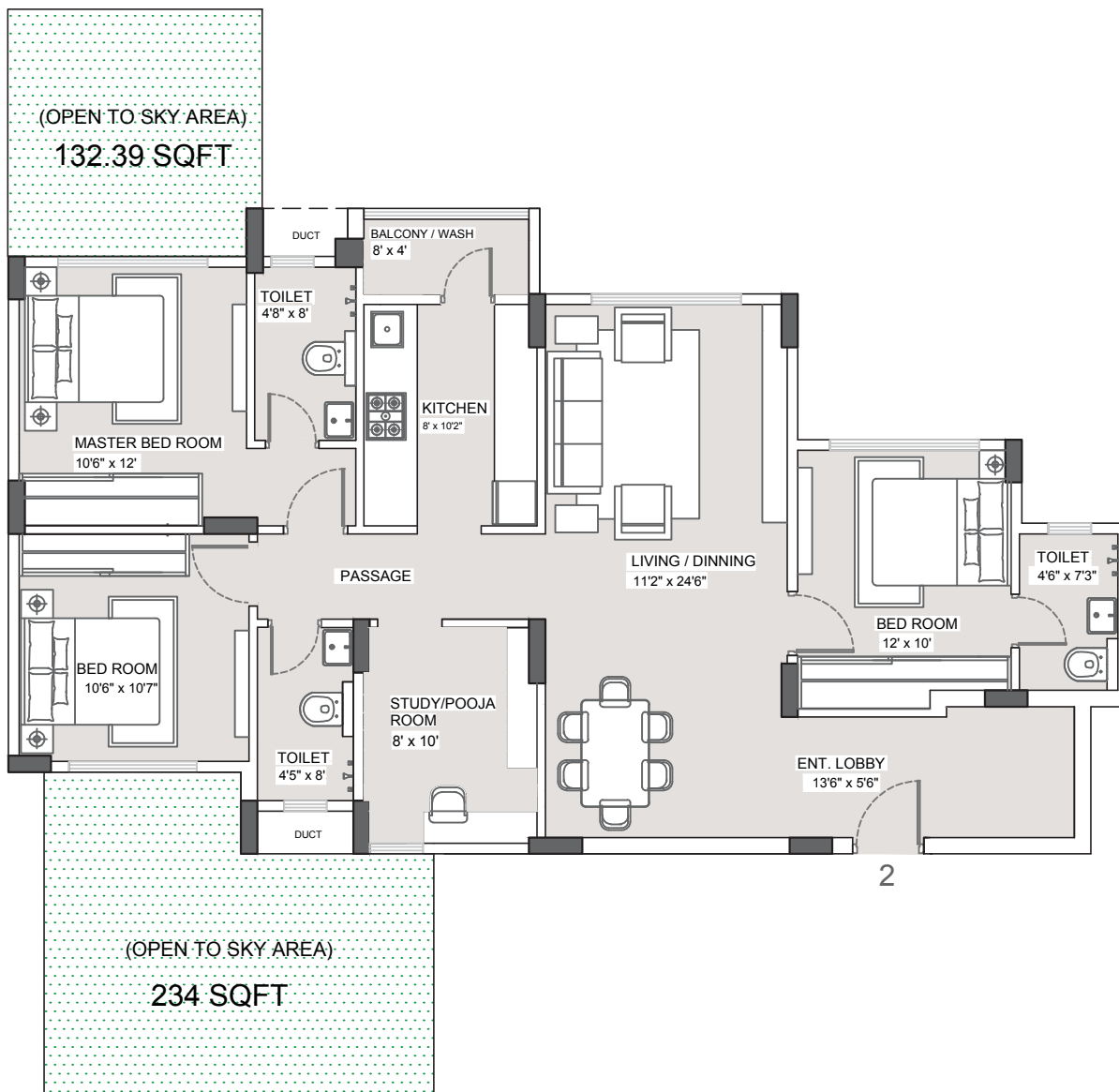


MAHALAXMI
City



VISUAL ARCHTECTURAL IMAGE/VIEW

FELICITA
3.5 BHK APARTMENTS



FELICITA at Mahalaxmi City

Floor Plan 3.5 BHK (Carpet Area - 1090 Sqft)

(Floor plan of Block-17 (F) for unit no. 002)

Disclaimer - The Dimension mentioned on these floor plans are as per the plans approved by NMRDA. The furniture / fixture etc shown in the image are only indicative and representative (not actual) in nature and are only for the purpose of illustrating / reflecting a possible layout and do not form part of the standard specification, amenities, services, etc. to be provided in respect of the flat. All specification of the flat shall be as per the ATS between the parties. This document may be modified and amended as mentioned in the proforma ATS.

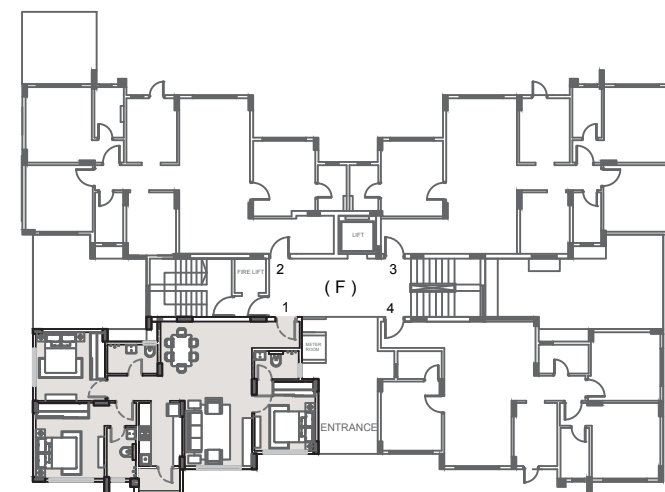
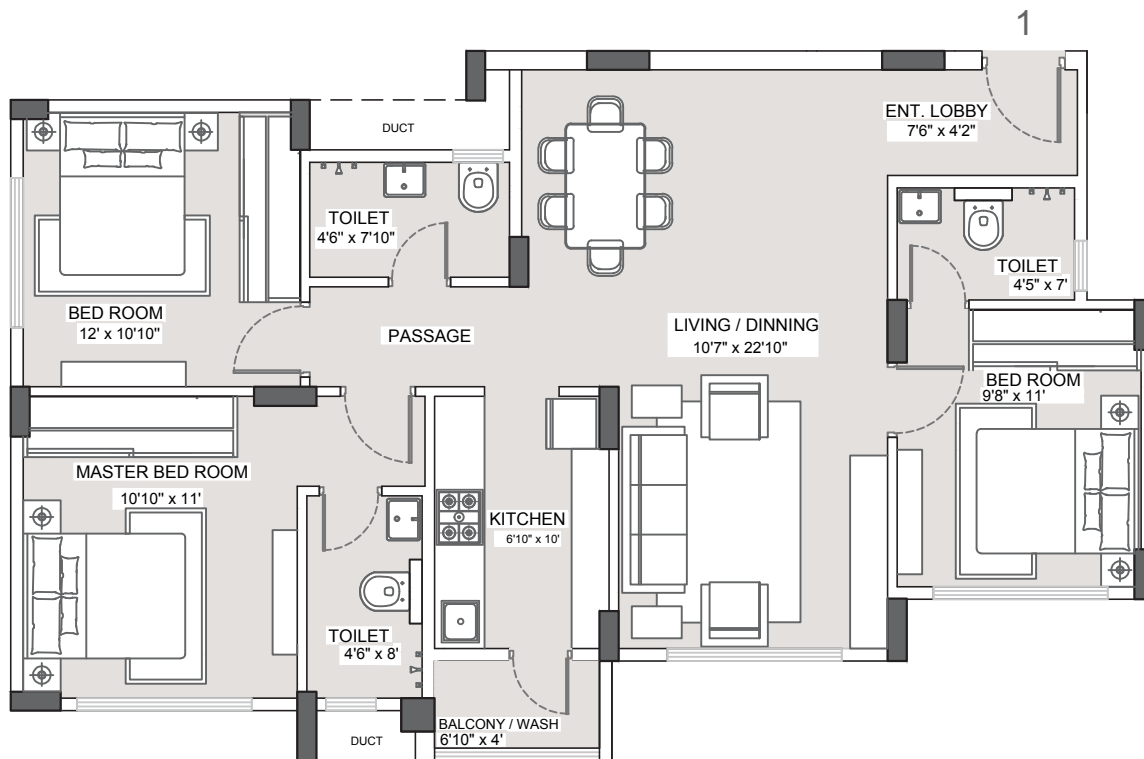


MAHALAXMI
City



VISUAL ARCHTECTURAL IMAGE/VIEW

FELICITA
3 BHK APARTMENTS



FELICITA at Mahalaxmi City

Floor Plan 3 BHK (Carpet Area - 940 Sqft)

(Floor plan of Block-17 (F) for unit no. 001)

Disclaimer - The Dimension mentioned on these floor plans are as per the plans approved by NMRDA. The furniture / fixture etc shown in the image are only indicative and representative (not actual) in nature and are only for the purpose of illustrating / reflecting a possible layout and do not form part of the standard specification, amenities, services, etc. to be provided in respect of the flat. All specification of the flat shall be as per the ATS between the parties. This document may be modified and amended as mentioned in the proforma ATS.



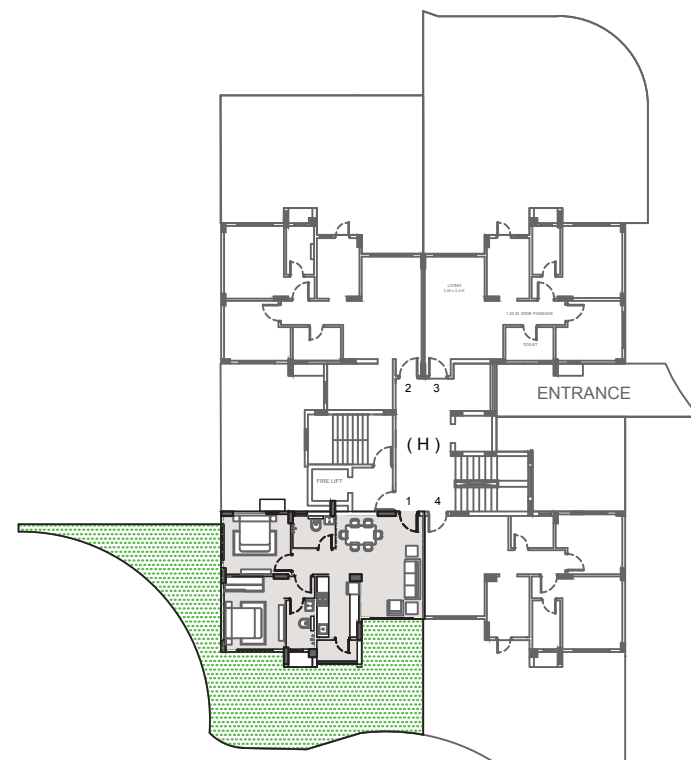
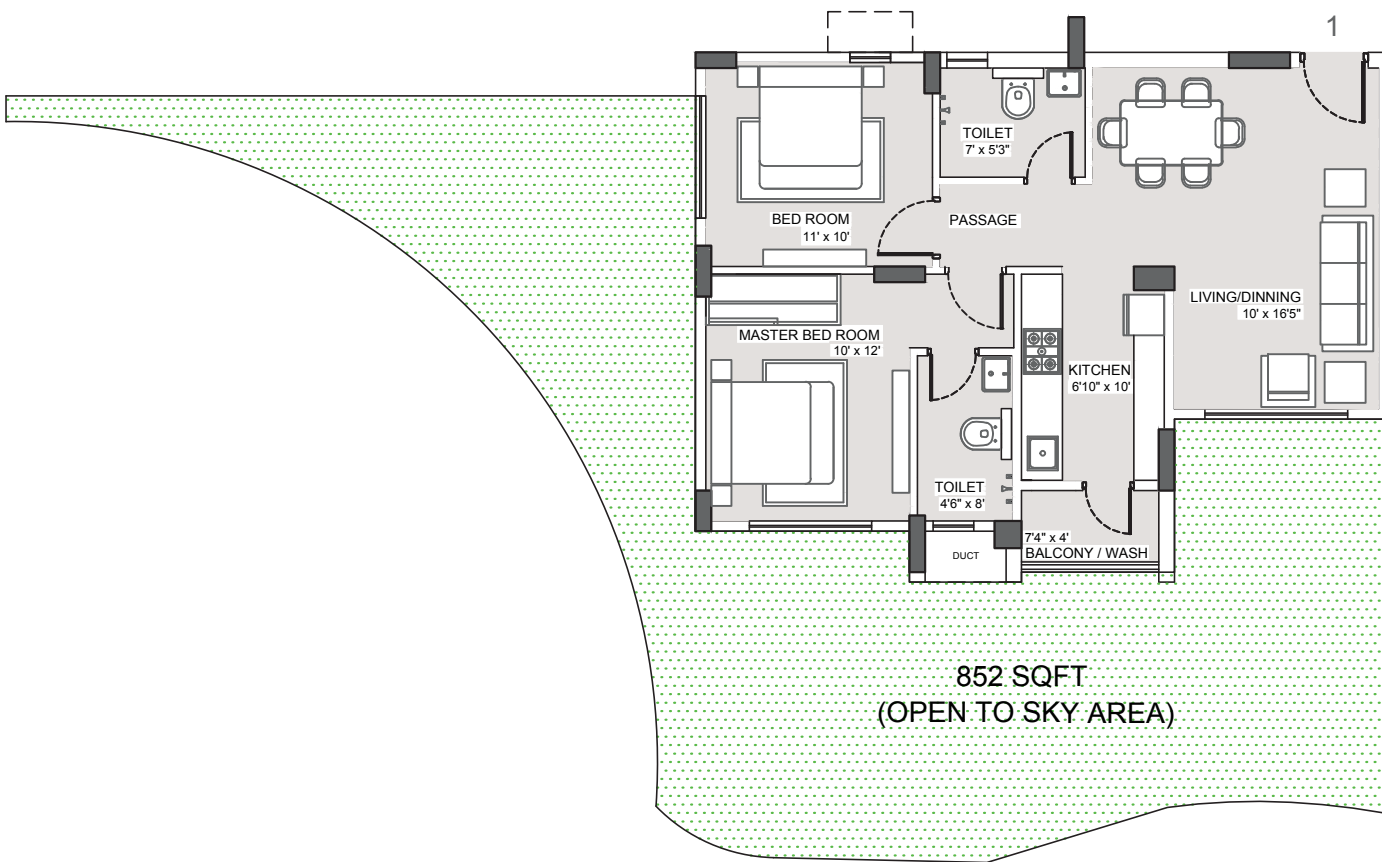


MAHALAXMI
City



VISUAL ARCHTECTURAL IMAGE/VIEW

PICCOLO
2 BHK APARTMENTS



PICCOLO at Mahalaxmi City

Floor Plan 2 BHK (Carpet Area - 643 Sqft)

(Typical floor plan of Block-17 (H) for unit no. 001)

Disclaimer - The Dimension mentioned on these floor plans are as per the plans approved by NMRDA. The furniture / fixture etc shown in the image are only indicative and representative (not actual) in nature and are only for the purpose of illustrating / reflecting a possible layout and do not form part of the standard specification, amenities, services, etc. to be provided in respect of the flat. All specification of the flat shall be as per the ATS between the parties. This document may be modified and amended as mentioned in the proforma ATS.

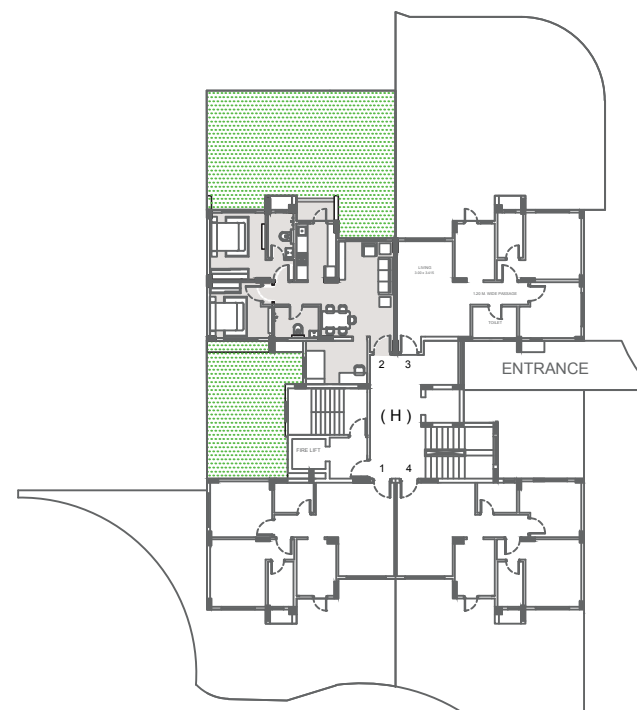
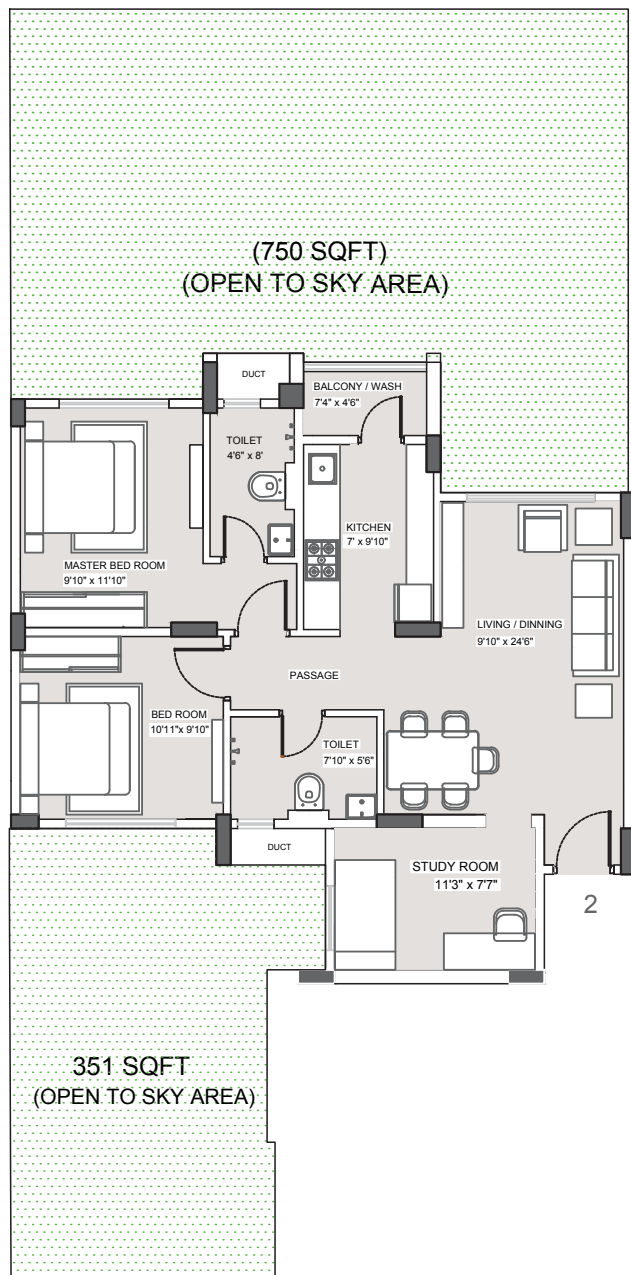


MAHALAXMI
City



VISUAL ARCHTECTURAL IMAGE/VIEW

PICCOLO
2.5 BHK APARTMENTS



PICCOLO at Mahalaxmi City

Floor Plan 2 BHK (Carpet Area - 752 Sqft)

(Floor plan of Block17 (H) For unit no. 002)

Disclaimer - The Dimension mentioned on these floor plans are as per the plans approved by NMRDA. The furniture / fixture etc shown in the image are only indicative and representative (not actual) in nature and are only for the purpose of illustrating / reflecting a possible layout and do not form part of the standard specification, amenities, services, etc. to be provided in respect of the flat. All specification of the flat shall be as per the ATS between the parties. This document may be modified and amended as mentioned in the proforma ATS.

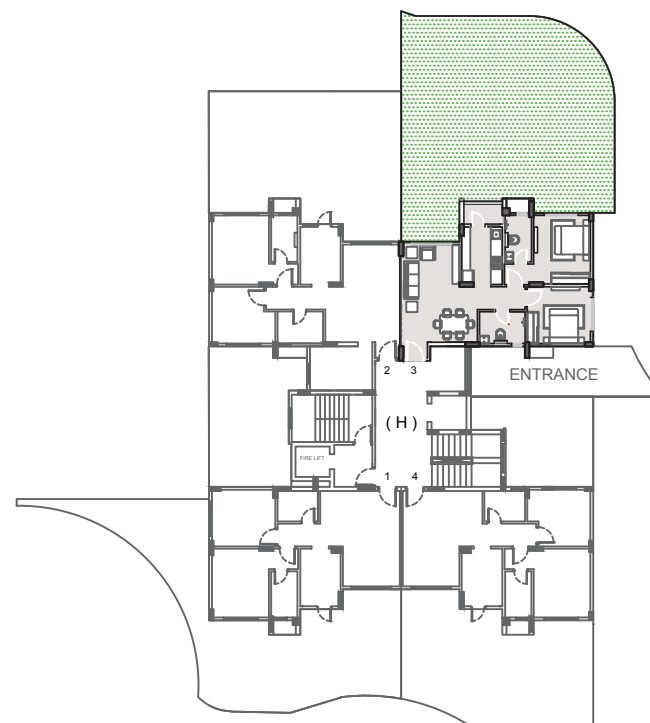
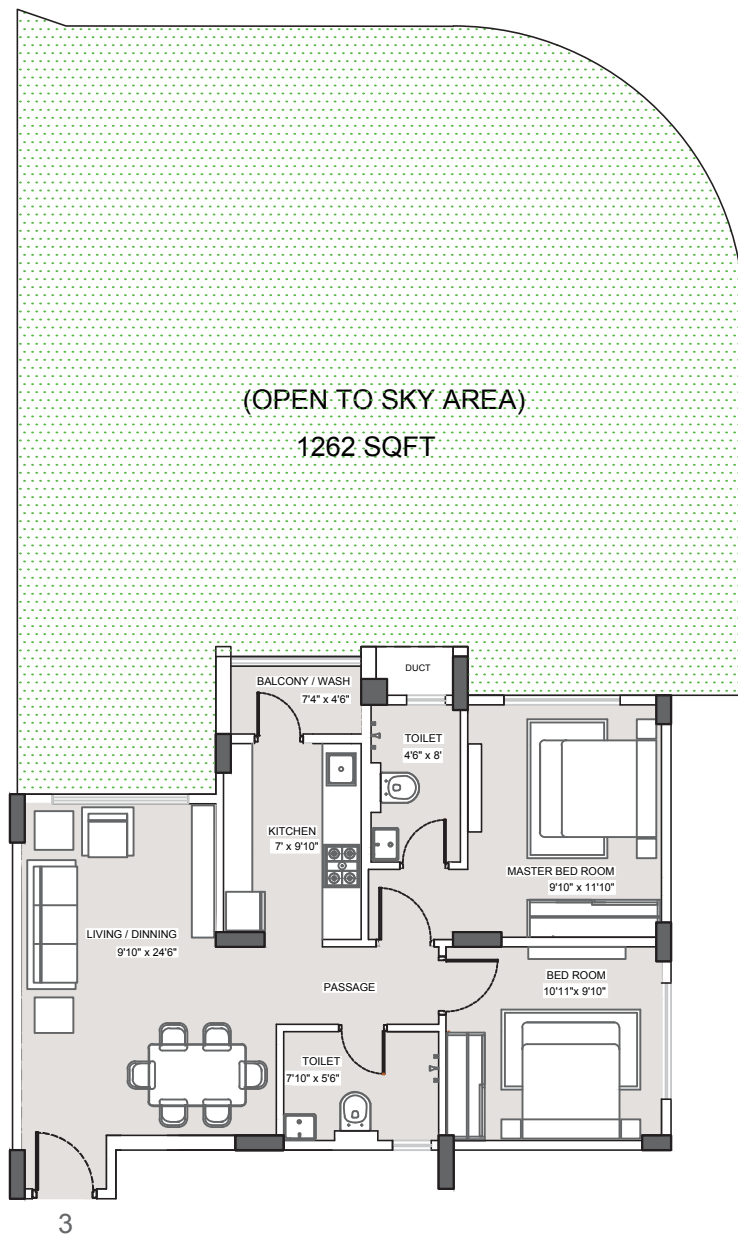


MAHALAXMI
City



VISUAL ARCHTECTURAL IMAGE/VIEW

PICCOLO
2 BHK APARTMENTS



PICCOLO at Mahalaxmi City

Typical Floor Plan 2 BHK (Carpet Area - 661 Sqft)

(Floor plan of Block-17 (H) For unit No.-003)

Disclaimer - The Dimension mentioned on these floor plans are as per the plans approved by NMRDA. The furniture / fixture etc shown in the image are only indicative and representative (not actual) in nature and are only for the purpose of illustrating / reflecting a possible layout and do not form part of the standard specification, amenities, services, etc. to be provided in respect of the flat. All specification of the flat shall be as per the ATS between the parties. This document may be modified and amended as mentioned in the proforma ATS.

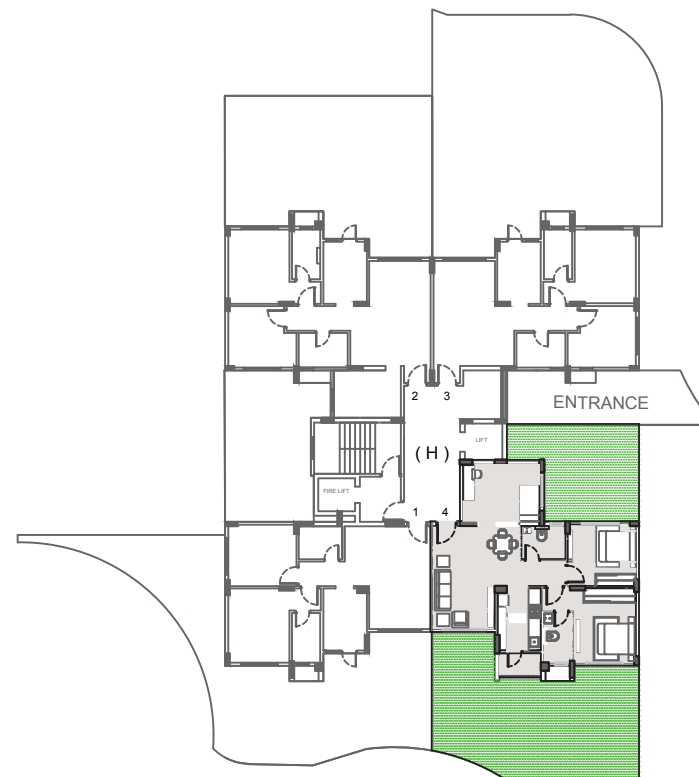
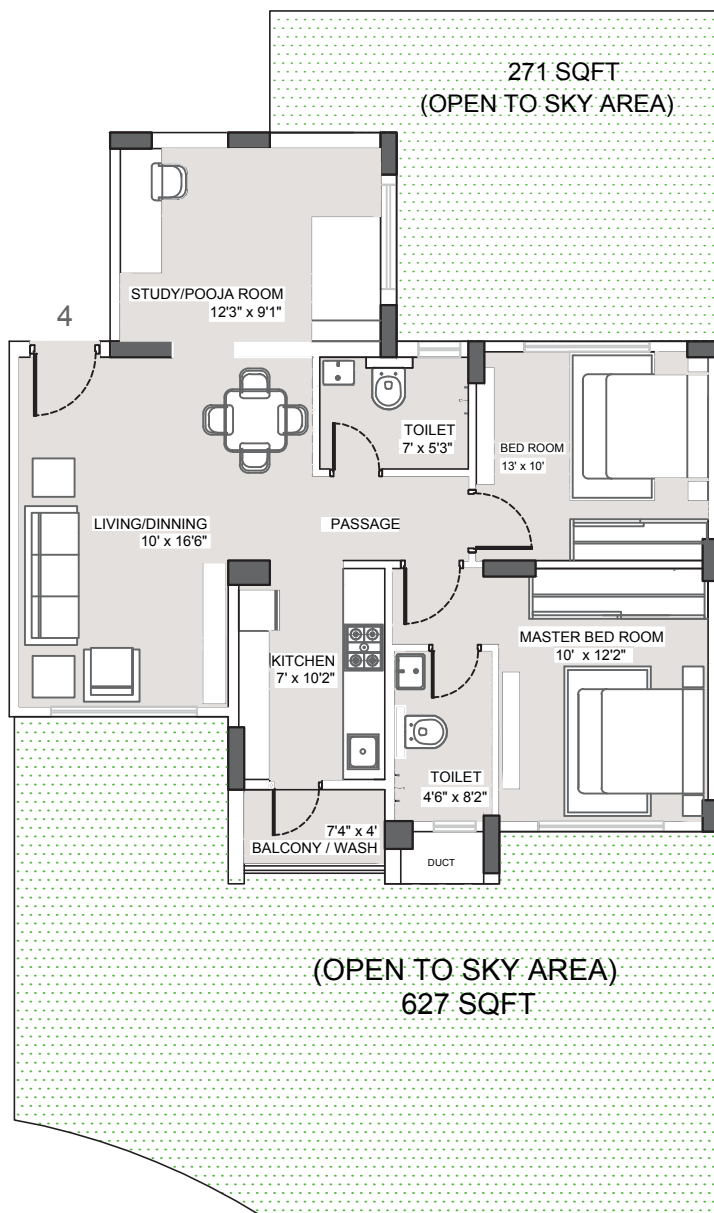


MAHALAXMI
City



VISUAL ARCHITECTURAL IMAGE/VIEW

PICCOLO
2.5 BHK APARTMENTS



PICCOLO at Mahalaxmi City

Floor Plan 2.5 BHK (Carpet Area - 765 Sqft)

(Floor plan of Block-17 (H) for unit no. 004)

Disclaimer - The Dimension mentioned on these floor plans are as per the plans approved by NMRDA. The furniture / fixture etc shown in the image are only indicative and representative (not actual) in nature and are only for the purpose of illustrating / reflecting a possible layout and do not form part of the standard specification, amenities, services, etc. to be provided in respect of the flat. All specification of the flat shall be as per the ATS between the parties. This document may be modified and amended as mentioned in the proforma ATS.

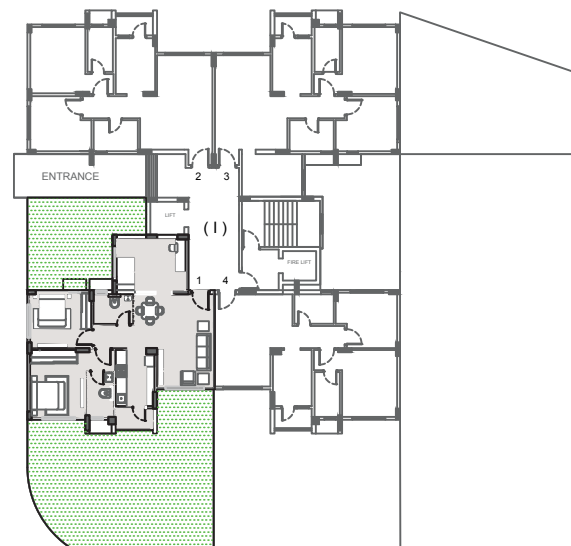
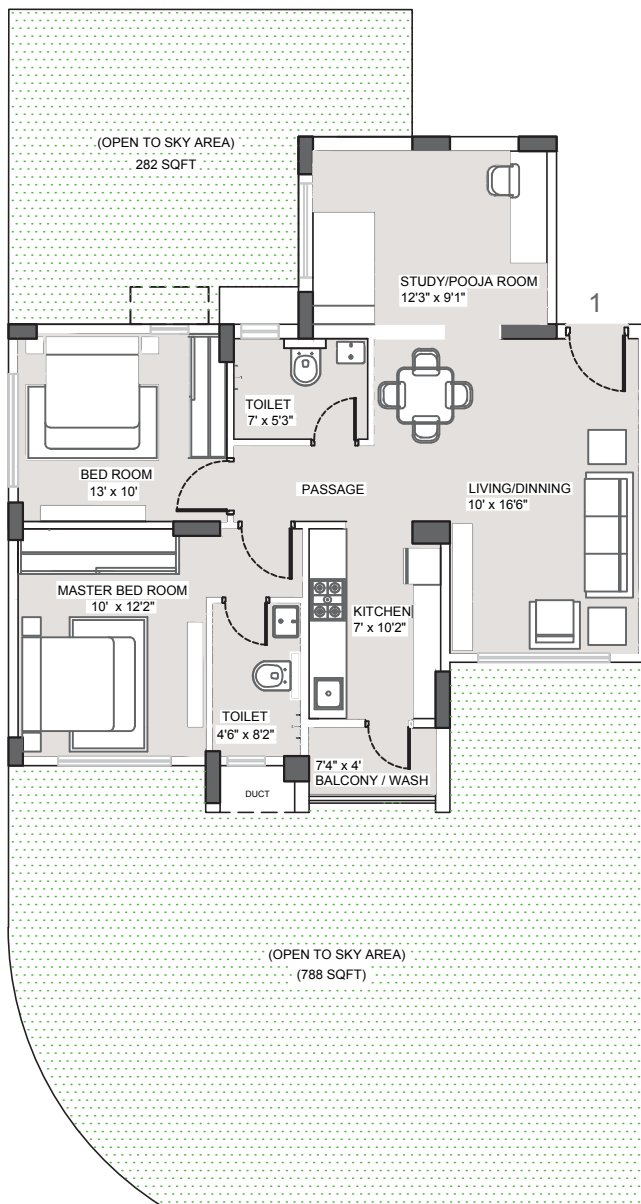


MAHALAXMI
City



VISUAL ARCHTECTURAL IMAGE/VIEW

PICCOLO
2.5 BHK APARTMENTS



PICCOLO at Mahalaxmi City

Floor Plan 2.5 BHK (Carpet Area - 765 Sqft)

(Floor plan of Block-17 (1) for unit no. 001)

Disclaimer - The Dimension mentioned on these floor plans are as per the plans approved by NMRDA. The furniture / fixture etc shown in the image are only indicative and representative (not actual) in nature and are only for the purpose of illustrating / reflecting a possible layout and do not form part of the standard specification, amenities, services, etc. to be provided in respect of the flat. All specification of the flat shall be as per the ATS between the parties. This document may be modified and amended as mentioned in the proforma ATS.



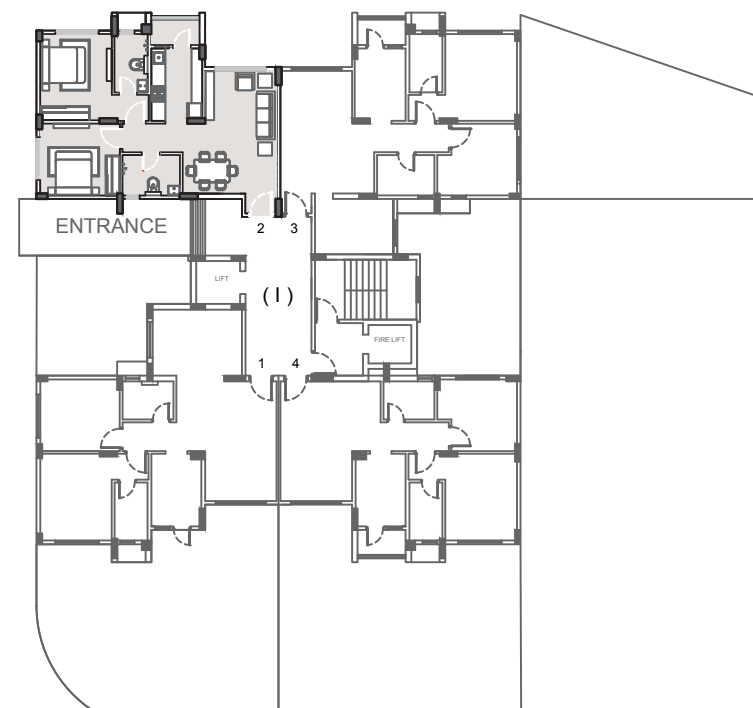
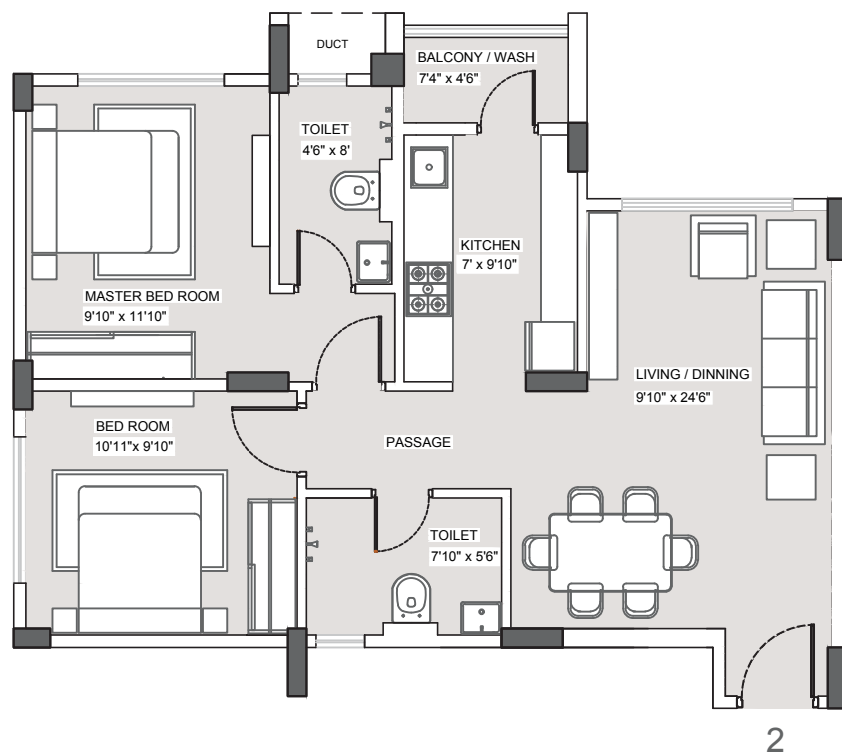


MAHALAXMI
City



VISUAL ARCHTECTURAL IMAGE/VIEW

PICCOLO
2 BHK APARTMENTS



PICCOLO at Mahalaxmi City

Typical Floor Plan 2 BHK (Carpet Area - 661 Sqft)

(Floor plan of Block-17 (I) For unit No.-002)

Disclaimer - The Dimension mentioned on these floor plans are as per the plans approved by NMRDA. The furniture / fixture etc shown in the image are only indicative and representative (not actual) in nature and are only for the purpose of illustrating / reflecting a possible layout and do not form part of the standard specification, amenities, services, etc. to be provided in respect of the flat. All specification of the flat shall be as per the ATS between the parties. This document may be modified and amended as mentioned in the proforma ATS.

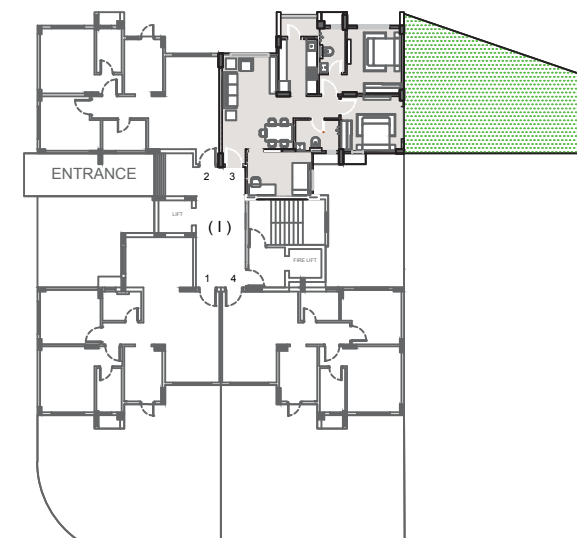
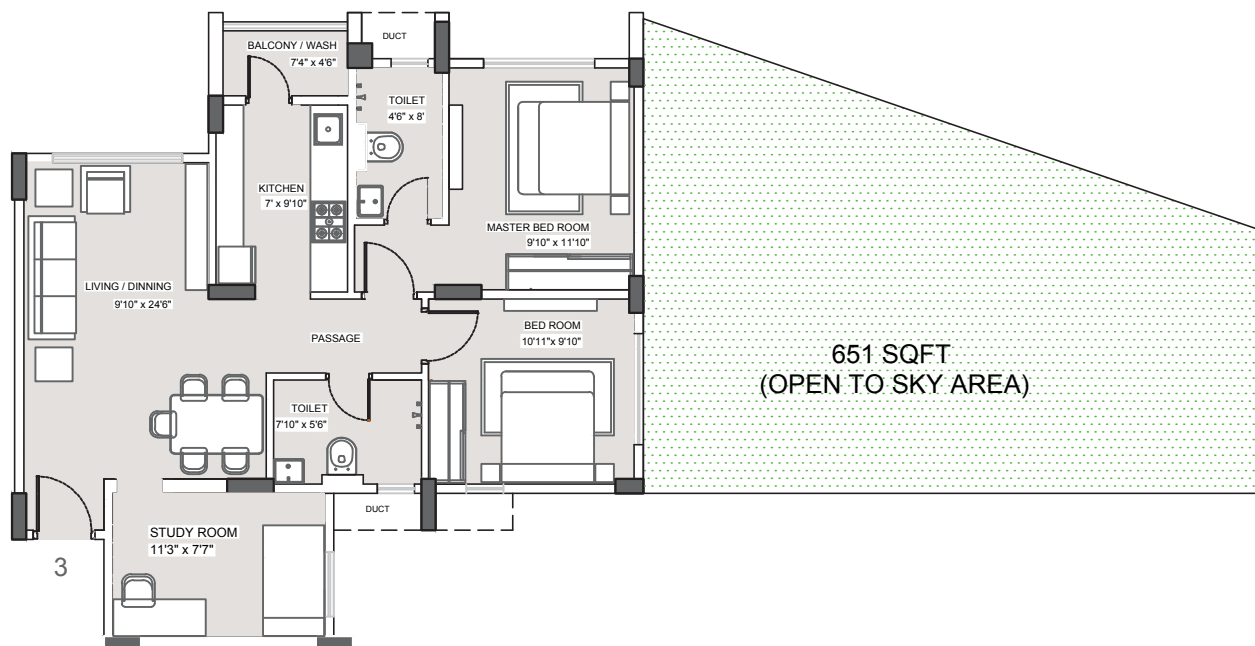


MAHALAXMI
City



VISUAL ARCHTECTURAL IMAGE/VIEW

PICCOLO
2.5 BHK APARTMENTS



PICCOLO at Mahalaxmi City

Floor Plan 2.5 BHK (Carpet Area - 752 Sqft)

(Floor plan of Block17 (I) For unit no. 003)

Disclaimer - The Dimension mentioned on these floor plans are as per the plans approved by NMRDA. The furniture / fixture etc shown in the image are only indicative and representative (not actual) in nature and are only for the purpose of illustrating / reflecting a possible layout and do not form part of the standard specification, amenities, services, etc. to be provided in respect of the flat. All specification of the flat shall be as per the ATS between the parties. This document may be modified and amended as mentioned in the proforma ATS.



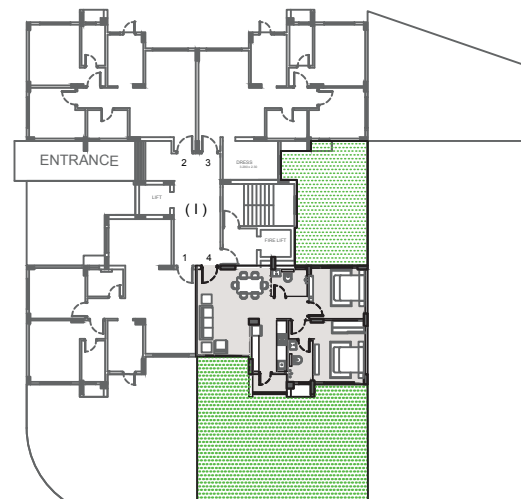
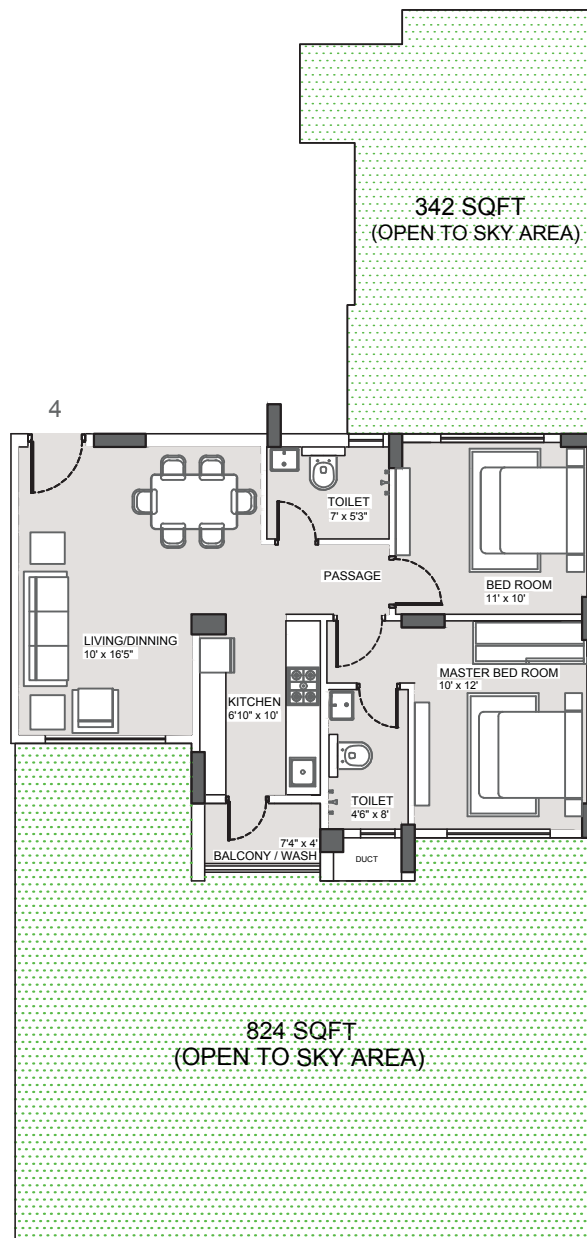


MAHALAXMI
City



VISUAL ARCHITECTURAL IMAGE/VIEW

PICCOLO
2 BHK APARTMENTS



PICCOLO at Mahalaxmi City

Floor Plan 2 BHK Carpet Area - 643 Sqft)

(Floor plan of Block-17 (1) for unit no. 004)

Disclaimer - The Dimension mentioned on these floor plans are as per the plans approved by NMRDA. The furniture / fixture etc shown in the image are only indicative and representative (not actual) in nature and are only for the purpose of illustrating / reflecting a possible layout and do not form part of the standard specification, amenities, services, etc. to be provided in respect of the flat. All specification of the flat shall be as per the ATS between the parties. This document may be modified and amended as mentioned in the proforma ATS.





MAHALAXMI
City

A PLACE YOU CAN CALL HOME

Mahalaxmi City, Outer Ring Road, Bokhara Koradi
Road, Nagpur- 441111

+91 9890028974 | +91 9130493092

sales@mahalaxmicity.com

mahalaxmicity.com